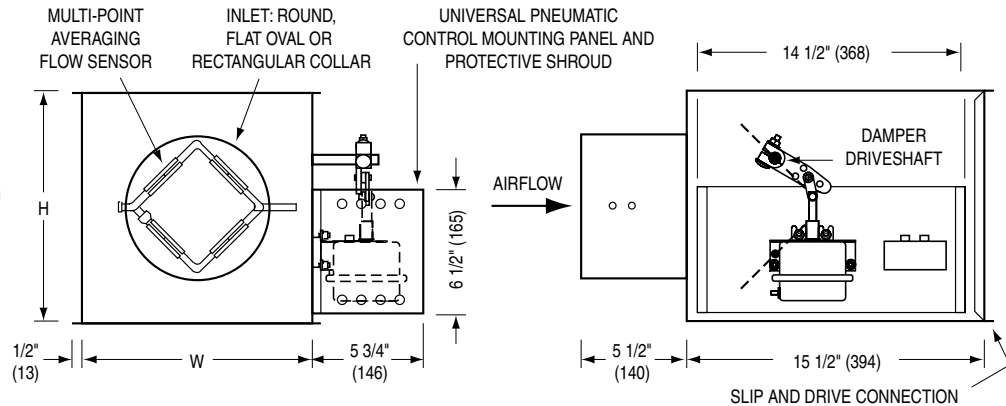


Dimensions

Model Series 3001 • Basic Unit with Controls

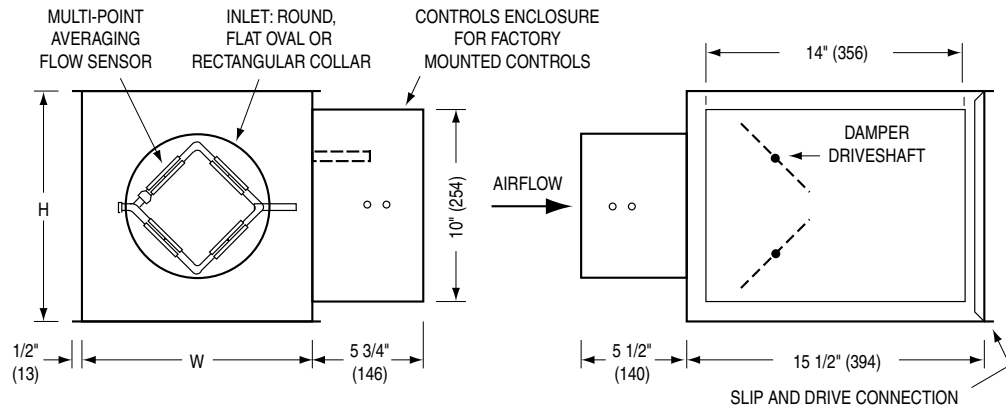
Pneumatic Controls

- Universal pneumatic control mounting panel features double wall stand-off construction for strength and rigidity. Controls mounting screws do not penetrate terminal casing.



Analog Electronic and Digital Controls

- A full NEMA 1 controls enclosure is provided for factory mounted controls. Optional for field mounted controls.



Dimensional Data

| Imperial Units (inches) | | | | |
|-------------------------|-----------|----|--------|-------------------------|
| Unit Size | cfm Range | W | H | Inlet Size |
| 4 | 0 – 215 | 10 | 10 | 3 7/8 Round |
| 5 | 0 – 310 | 10 | 10 | 4 7/8 Round |
| 6 | 0 – 500 | 10 | 10 | 5 7/8 Round |
| 7 | 0 – 710 | 12 | 12 1/2 | 6 7/8 Round |
| 8 | 0 – 1000 | 12 | 12 1/2 | 7 7/8 Round |
| 9 | 0 – 1300 | 14 | 12 1/2 | 8 7/8 Round |
| 10 | 0 – 1435 | 14 | 12 1/2 | 9 7/8 Round |
| 12 | 0 – 2185 | 18 | 12 1/2 | 12 15/16 x 9 13/16 Oval |
| 14 | 0 – 2745 | 24 | 12 1/2 | 16 1/16 x 9 13/16 Oval |
| 16 | 0 – 3730 | 28 | 12 1/2 | 19 3/16 x 9 13/16 Oval |
| 24 x 16 | 0 – 6435 | 38 | 18 | 23 7/8 x 15 1/2 Rect. |

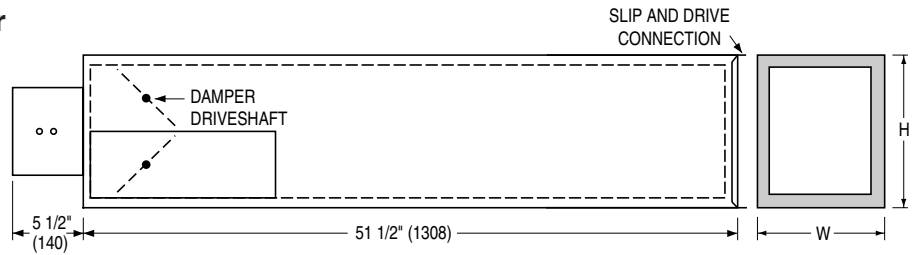
| Metric Units (mm) | | | | |
|-------------------|-----------|-----|-----|-----------------|
| Unit Size | l/s Range | W | H | Inlet Size |
| 4 | 0 – 101 | 254 | 254 | 98 Round |
| 5 | 0 – 146 | 254 | 254 | 124 Round |
| 6 | 0 – 236 | 254 | 254 | 149 Round |
| 7 | 0 – 335 | 305 | 318 | 175 Round |
| 8 | 0 – 472 | 305 | 318 | 200 Round |
| 9 | 0 – 614 | 356 | 318 | 225 Round |
| 10 | 0 – 677 | 356 | 318 | 251 Round |
| 12 | 0 – 1031 | 457 | 318 | 329 x 249 Oval |
| 14 | 0 – 1296 | 610 | 318 | 408 x 249 Oval |
| 16 | 0 – 1761 | 711 | 318 | 487 x 249 Oval |
| 24 x 16 | 0 – 3037 | 965 | 457 | 606 x 403 Rect. |

Dimensions

Model Series 3000 • Single Duct Accessories

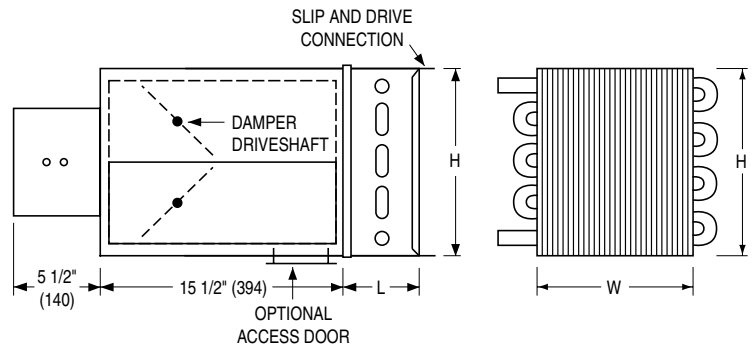
Integral Sound Attenuator

- Single continuous length terminal construction minimizes casing leakage.
- Continuous internal insulation reduces insulation seams and minimizes airflow disturbance.



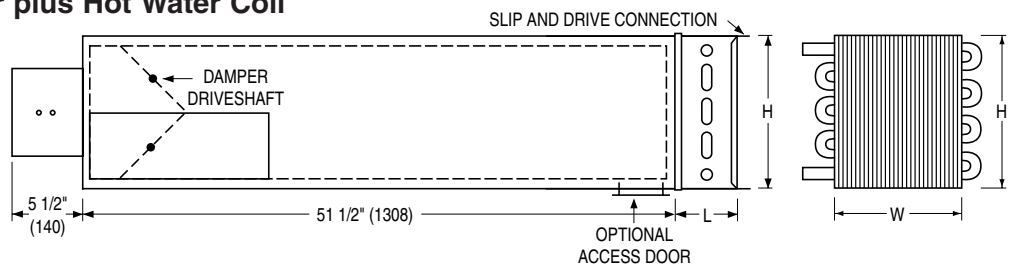
Hot Water Reheat Coils

- One, two, three and four row available.
- Hot water coils have copper tubes and aluminum ripple fins. Coils have 1/2" (13), 7/8" (22) or 1 3/8" (35) O.D. sweat connections.
- Right or left hand coil connection is determined by looking through the terminal inlet in the direction of airflow.
- Galvanized steel casing with slip and drive discharge duct connection.
- Optional low leakage gasketed access door is recommended for coil access and cleaning.
- ARI Certified.
- Coil Performance data on pages B19-B27.



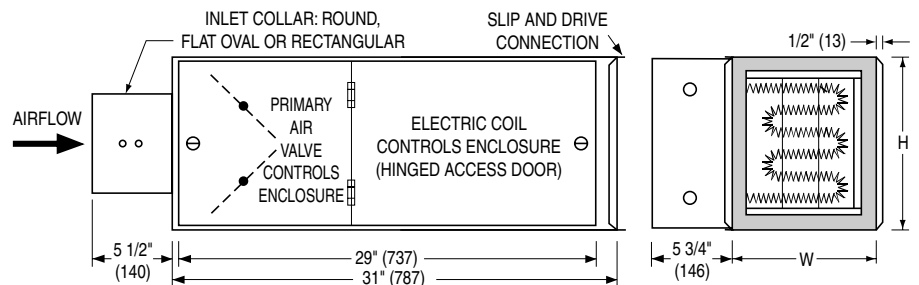
Integral Attenuator plus Hot Water Coil

- All the benefits of both the Integral Sound Attenuator and the Hot Water Coils shown above in one.
- Coil performance data on pages B19-B27.



Integral Electric Reheat

- Electric coil is factory mounted in an integral extended plenum section.
- Perforated diffuser plate minimizes air stratification.
- Full details and selection guide on page B28.



Dimensional Data

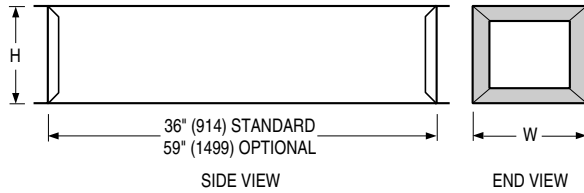
| Imperial Units (inches) | | | | |
|-------------------------|----|----------------|---------------|---------------|
| | | Hot Water Coil | | |
| Unit Size | W | H | L (1 & 2 row) | L (3 & 4 row) |
| 4, 5, 6 | 10 | 10 | 5 | 7 1/2 |
| 7, 8 | 12 | 12 1/2 | 5 | 7 1/2 |
| 9, 10 | 14 | 12 1/2 | 5 | 7 1/2 |
| 12 | 18 | 12 1/2 | 5 | 7 1/2 |
| 14 | 24 | 12 1/2 | 5 | 7 1/2 |
| 16 | 28 | 12 1/2 | 5 | 7 1/2 |
| 24 x 16 | 38 | 18 | 5 | 7 1/2 |

| Metric Units (mm) | | | | |
|-------------------|-----|----------------|---------------|---------------|
| | | Hot Water Coil | | |
| Unit Size | W | H | L (1 & 2 row) | L (3 & 4 row) |
| 4, 5, 6 | 254 | 254 | 127 | 191 |
| 7, 8 | 305 | 318 | 127 | 191 |
| 9, 10 | 356 | 318 | 127 | 191 |
| 12 | 457 | 318 | 127 | 191 |
| 14 | 610 | 318 | 127 | 191 |
| 16 | 711 | 318 | 127 | 191 |
| 24 x 16 | 965 | 457 | 127 | 191 |

Dimensions

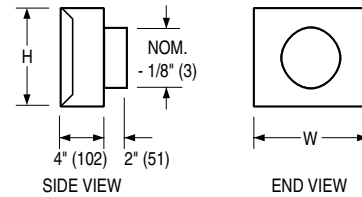
Model Series 3000 • Single Duct Accessories

AT Discharge Sound Attenuator



- Shipped loose for field attachment.
- Slip and drive connection.
- Supplied as standard with same liner as basic unit.

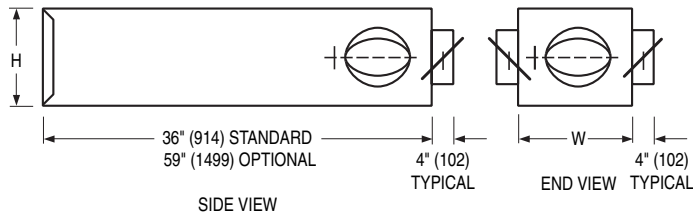
FF Round Discharge Collar



B

SINGLE DUCT TERMINAL UNITS

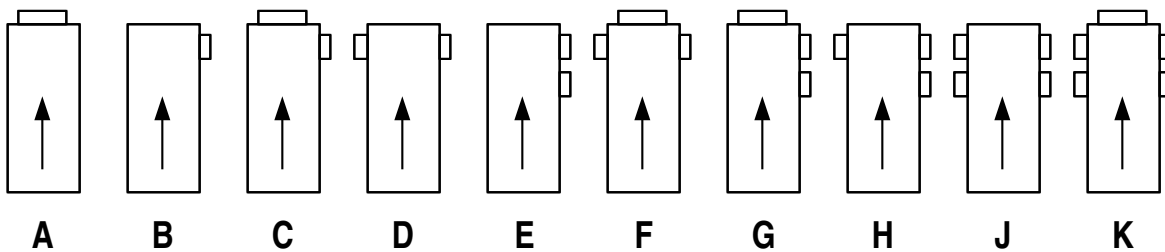
MOA Multi-Outlet Attenuator



- Only one outlet size to be specified per M.O.A. No mixing of outlet sizes on the same unit. Number and size of outlets on M.O.A. not to exceed the limits listed in table, both maximum quantity of outlets and maximum size of outlet.
- All round outlets c/w manual dampers with hand locking quadrant.
- 3/4" (19) dual density insulation.
- Denotes inlet airflow direction. →
- For special outlet sizes and arrangements, consult your Nailor representative.

| Unit Size | M.O.A. Outlets |
|----------------------------|-------------------------------|
| 4, 5, 6 (102, 127, 152) | 3 @ 6" (152) |
| 7, 8 (178, 203) | 5 @ 6" (152) 5 @ 8" (203) |
| 9, 10 (229, 254) | 5 @ 8" (203) 4 @ 10" (254) |
| 12 (305) | 5 @ 8" (203) 5 @ 10" (254) |
| 14, 16 (356, 406) | 5 @ 10" (254) |

Standard Outlet Arrangements



Dimensional Data

| Unit Size | Imperial Units | | | Metric Units | | |
|-----------|----------------|------|----------------|--------------|-----|----------------|
| | W | H | FF Outlet Size | W | H | FF Outlet Size |
| 4, 5, 6 | 10 | 10 | 4, 5, 6 | 254 | 254 | 102, 127, 152 |
| 7, 8 | 12 | 12 ½ | 7, 8 | 305 | 318 | 178, 203 |
| 9, 10 | 14 | 12 ½ | 9, 10 | 356 | 318 | 229, 254 |
| 12 | 18 | 12 ½ | 12 | 457 | 318 | 305 |
| 14 | 24 | 12 ½ | 14 | 610 | 318 | 356 |
| 16 | 28 | 12 ½ | 16 | 711 | 318 | 406 |
| 24 x 16 | 38 | 18 | — | 965 | 457 | — |