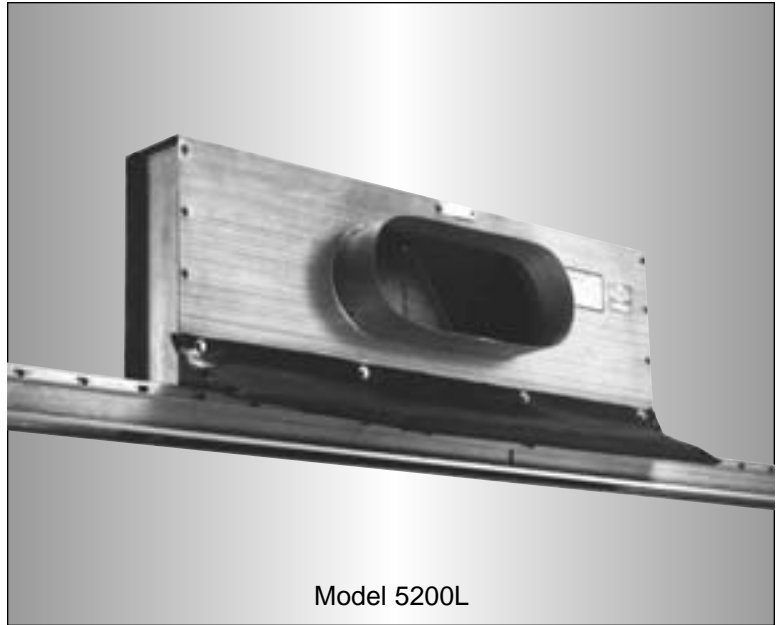


FIRE RATED OPEN FACE PLENUM DIFFUSER

- FOR USE WITH LINEAR TYPE DIFFUSERS
- 3 HOUR RATING
- LAY-IN



CATEGORY
BZGU



Turned In Leg Model:

5200L

Hemmed Leg Model:

5200S

F

FIRE RATED PRODUCTS

The **Nailor Model Series 5200** is a UL Classified fire rated air terminal unit listed in Underwriters Laboratories Fire Resistance Directory. This design meets UL time-vs-temperature test criteria and NFPA 90A requirements.

All diffusers are classified for use in UL restrained or unrestrained floor/ceiling and or roof/ceiling assemblies which incorporate an exposed grid suspended ceiling (lay-in T-Bar) with up to a 3 hour rating. For details of fire rated assemblies, see the current UL Fire Resistance Directory.

A maximum of 20 lineal ft. (6096) of 2" (51) wide throat opening, 10 lineal ft. (3048) of 4" (102) wide throat opening, or 5 lineal ft. (1524) of 6" (152) and 8" (203) width throat opening is allowed for each 113 sq. inch (72,903 mm²) duct outlet area permitted in specific design.

The **5200 Series** provides flexibility, in that a variety of steel or aluminum grilles, registers or linear type slot diffusers and bar grilles may be used.

FEATURES:

- Available in 20", 24", 30", 36", 48" and 60" (500, 600, 750, 900, 1200 and 1500) nominal lengths to suit both imperial and metric ceiling systems.
- 6", 8", 10" or 12" (152, 203, 254 or 305) inlet sizes are available.
- Plenum casing width (throat) dimension is variable and fabricated to suit required grille or diffuser.

Minimum = 1 11/16" (43).

Maximum = 8" (203).

- **Model 5200L** features a flat lip for lay-in type cores.
- **Model 5200S** features a hemmed leg for surface mounting a grille or diffuser with Type C concealed mounting straps.
- 212°F (100°C) fusible link is standard (165°F (74°C) is optional).

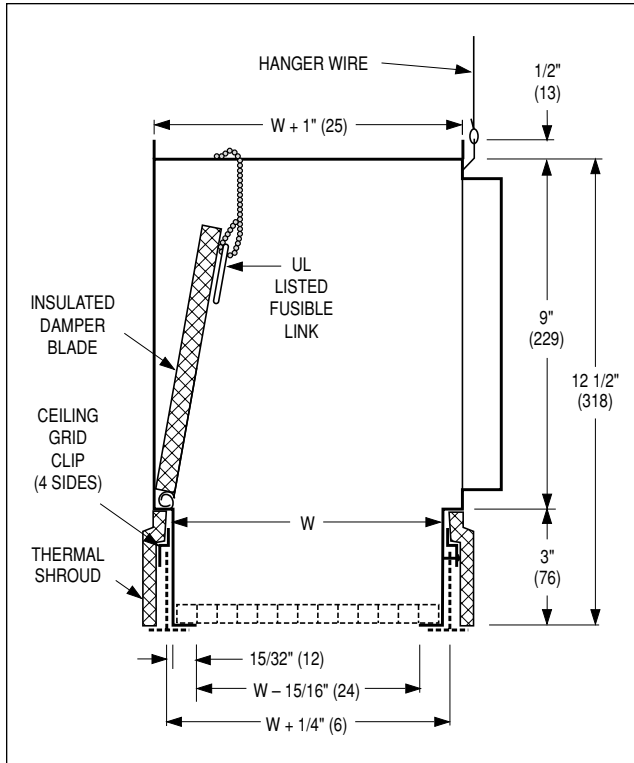
- All models must be installed in accordance with installation instructions for UL Classification.

Material: Corrosion-resistant steel plenum and damper blades. Non-asbestos UL Classified insulation.

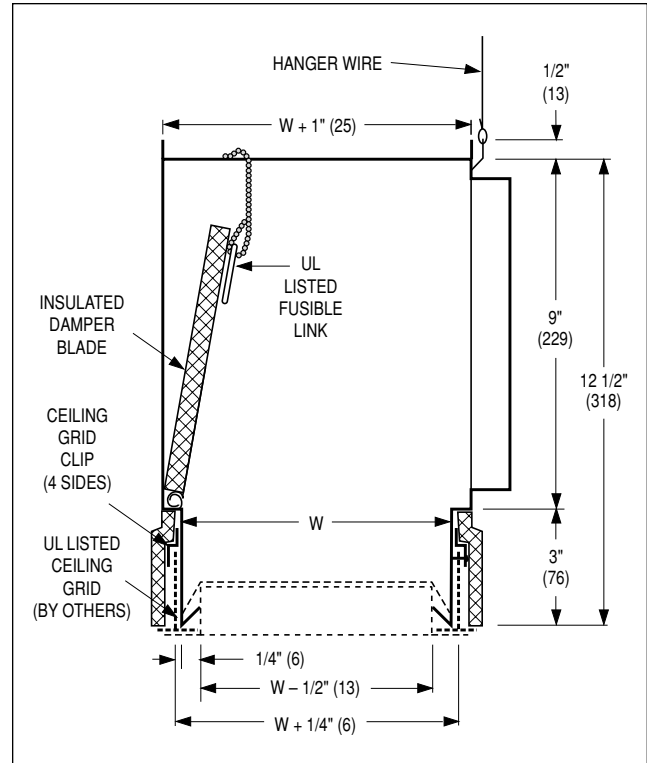
Finish: Exposed surfaces are finished in BK Black.

Dimensional Data

Model Series 5200 – Type L Turned In Leg • Lay-in Core Style



Model Series 5200 – Type S Hemmed Leg • Surface Mount Diffuser



- 'W' Dimension (throat) is variable and manufactured to suit required grille or diffuser. Minimum 'W' = 1 11/16" (43). Maximum 'W' = 8" (203).
- Type L design is for flangeless lay-in core styles. e.g. Eggcrate Core **Model 51EC** Type C Core Only or Linear Slot Diffuser –

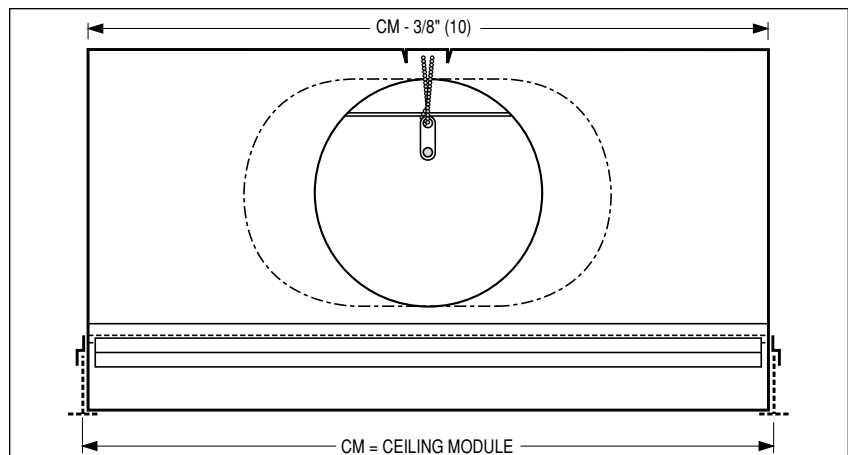
- **Model Series 5000, Frame Type M.** Unit is installed by diagonally inserting it into plenum opening and allowing it to sit back on plenum flanges.
- Type S design is for flanged diffusers with concealed mounting straps which locate in hemmed plenum leg. e.g. Linear

Slot Diffuser – **Model Series 5000, Frame Types C and D.**

- Available inlet sizes:
Round sizes are: 5", 6", 7" and 8" (127, 152, 178 and 203).
Flat oval sizes are: 9", 10" and 12" (229, 254 and 305).

Available Lengths

Nominal Length (CM)
20" (508)
24" (610)
30" (762)
36" (914)
48" (1219)
60" (1524)



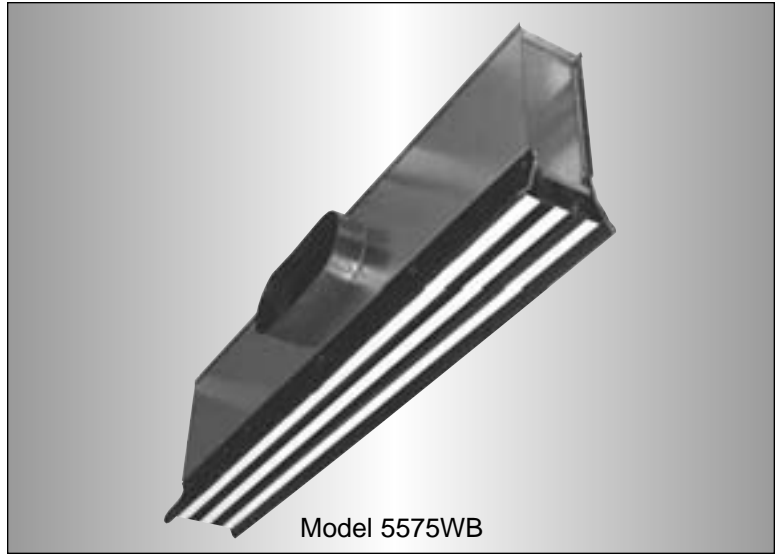
FIRE RATED PRODUCTS

FIRE RATED PLENUM SLOT SUPPLY DIFFUSER

- ADJUSTABLE 'WIPER BLADE' PATTERN CONTROLLER
- 3 HOUR RATING
- LAY-IN



CATEGORY
BZGU



Model 5575WB

Models:

5550WB 1/2" (13) Slot Width

5575WB 3/4" (19) Slot Width

5510WB 1" (25) Slot Width

5515WB 1 1/2" (38) Slot Width

The **Nailor Series 5500WB** is a UL Classified fire rated air terminal unit listed in Underwriters Laboratories Fire Resistance Directory. This design meets UL time-vs-temperature test criteria and NFPA 90A requirements.

All diffusers are classified for use in UL restrained or unrestrained floor/ceiling and or roof/ceiling assemblies which incorporate an exposed grid suspended ceiling (lay-in T-Bar) with up to a 3 hour rating. For details of fire rated assemblies, see the current UL Fire Resistance Directory.

The **5500WB Series** features a friction pivoted adjustable extruded aluminum pattern controller in each slot. A key feature is the gasketed 'wiper blade' design. The direction of airflow is adjustable through a full 180° from the face of the diffuser. In the horizontal discharge setting, either left or right, the gasket seal at the top of the blade seals tightly against the inside of the diffuser plenum casing or factory supplied center T-Bar, assuring positive directional control. The pattern controller may also be set for vertical discharge.

In the horizontal discharge setting, the coanda effect is maximized and a tight blanket of air is projected across the ceiling. The horizontal pattern is maintained throughout a wide range of cataloged air volumes from maximum to minimum flow and the **5500WB Series** therefore provides excellent performance in variable air volume applications.

FEATURES:

- Full 180° pattern controller adjustment means there are no 'lefts or rights'.
- Available in 20", 24", 36", 48" and 60" (500, 600, 900, 1200 and 1500) nominal lengths to suit both imperial and metric ceiling systems.
- Choice of four slot widths.
- Choice of 1, 2, 3 or 4 parallel slots.
- Factory installed center tees on multi-slot models are standard. They are dropped slightly below the diffuser face to align flush with the ceiling grid.
- Pattern controller is split mid-way on units 36" (900) and longer, permitting a 2-way opposite blow pattern from a single slot.
- Return models are available. See page F46.
- Units must be installed in accordance with the installation instructions for UL Classification.
- 212°F (100°C) fusible link is standard (165°F (74°C) is optional).

Options:

- T1 Supplementary ceiling grid (T-Bar) member on inlet side (UL Listed).
- EX External foil back insulation.
- ID Inlet damper.

Material: Corrosion-resistant steel plenum, extruded aluminum pattern controllers and factory supplied center tees.

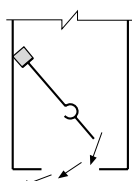
Finish: Black on pattern controllers and exposed surfaces. AW Appliance White on factory supplied T-Bars.

Performance Data: See non-fire rated **Model Series 5700** on page C12.

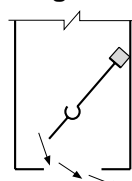
Air Patterns

Single Slot

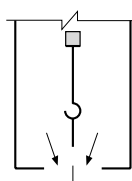
Multi-Slot



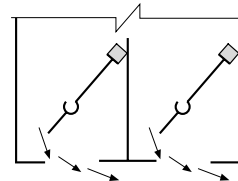
Horizontal Left



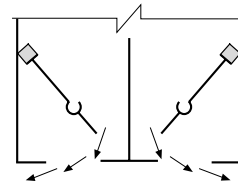
Horizontal Right



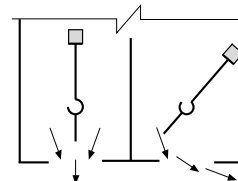
Vertical



One-way Horizontal



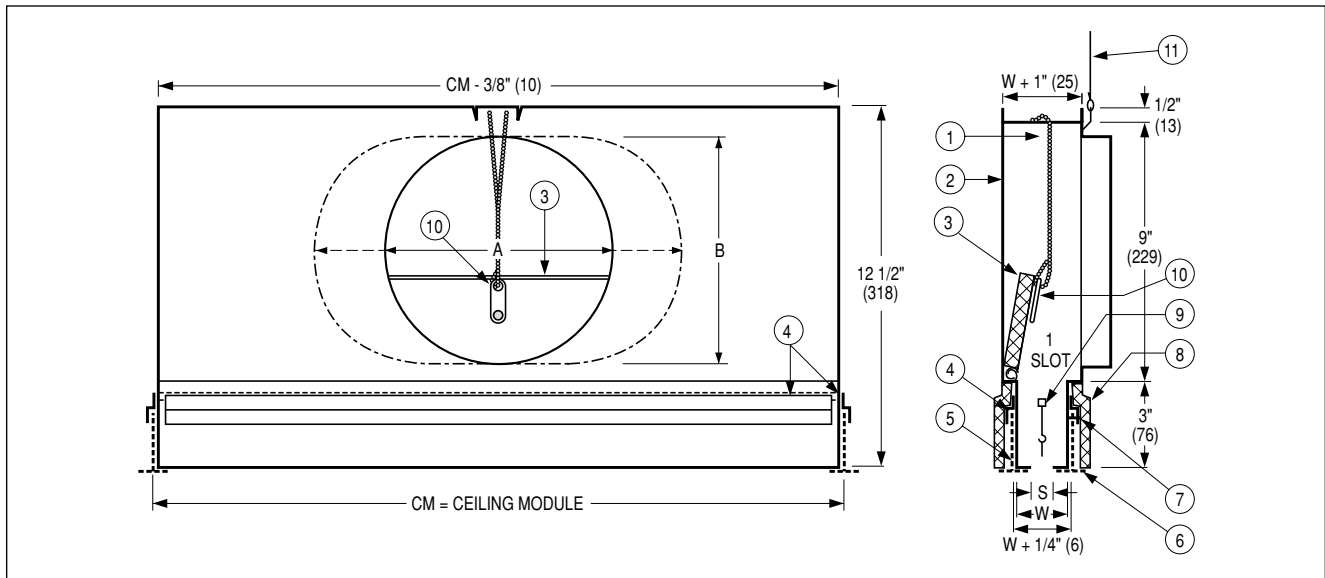
Two-way Opposite



Vertical and Horizontal

Dimensional Data Model Series 5500WB

UNDERWRITER'S LABORATORIES, INC.®
CLASSIFIED AIR TERMINAL UNITS
LISTED FOR UP TO 3 HOURS
CATEGORY BZGU

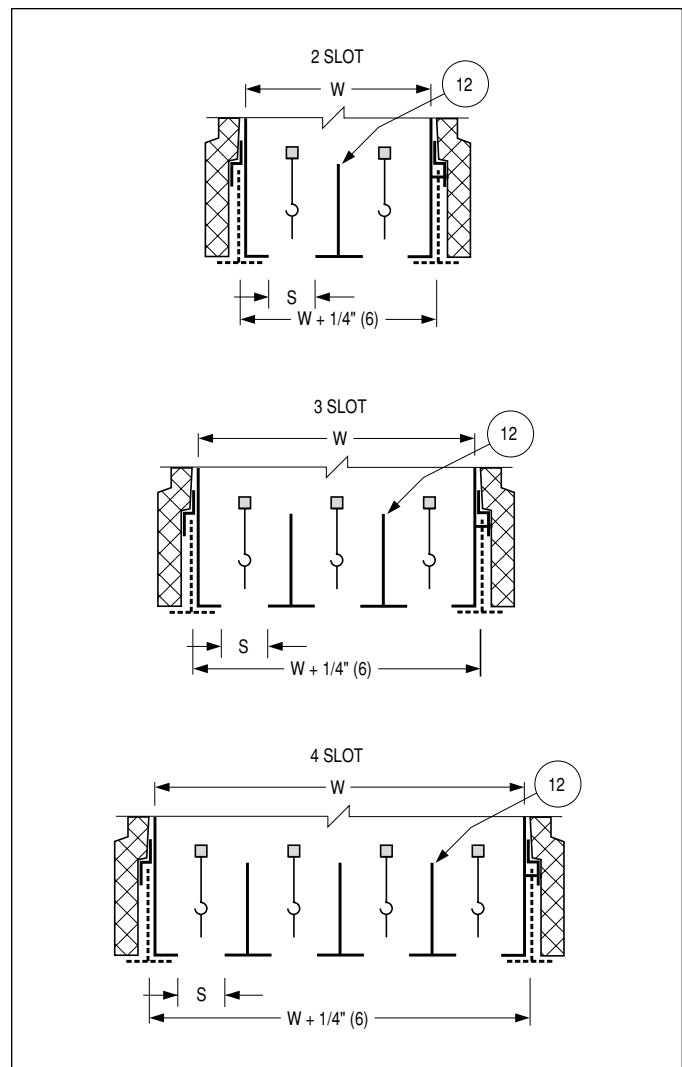


Items:

1. Fusible link damper support chain.
2. Diffuser casing.
3. Insulated, hinged damper blade.
4. Clip for ceiling grid member – 4 sides.
5. Existing grid member.
6. Supplementary ceiling grid member by others. UL Listed.
7. #8 screws for grid member attachment.
8. Thermal shroud.
9. Adjustable pattern controller.
10. UL Listed fusible link (replaceable).
11. Hanger wire at casing mid-point.
12. Intermediate grid bars (shown solid) supplied and installed by factory.

		S (Slot Width)			
		1/2" (13)	3/4" (19)	1" (25)	1 1/2" (38)
W (Width)	1 slot	1 1/2" (38)	1 3/4" (44)	2" (51)	2 1/2" (64)
	2 slot	3" (76)	3 1/2" (89)	4" (102)	5" (127)
	3 slot	4 1/2" (114)	5 1/4" (133)	6" (152)	7 1/2" (191)
	4 slot	6" (152)	7" (178)	8" (203)	N/A

		Nominal Inlet Size			
		6 (152) Round	8 (203) Round	10 (254) Oval	12 (305) Oval
A	5 7/8 (149)	7 7/8 (200)	11 (279)	14 1/8 (378)	
B	–	–	7 7/8 (200)	7 7/8 (200)	

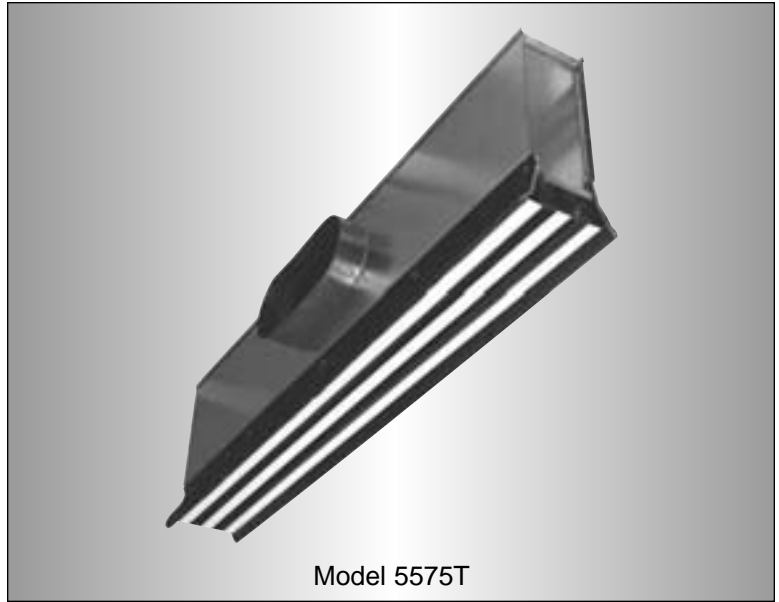


FIRE RATED PLENUM SLOT DIFFUSER

- ADJUSTABLE 'ICE TONG' PATTERN CONTROLLER
- 3 HOUR RATING
- LAY-IN



CATEGORY
BZGU



Models:

- 5550T 1/2" (13) Slot Width
- 5575T 3/4" (19) Slot Width
- 5510T 1" (25) Slot Width

F

FIRE RATED PRODUCTS

The **Nailor Series 5500T** is a UL Classified fire rated air terminal unit listed in Underwriters Laboratories Fire Resistance Directory. This design meets UL time-vs-temperature test criteria and NFPA 90A requirements.

All diffusers are classified for use in UL restrained or unrestrained floor/ceiling and or roof/ceiling assemblies which incorporate an exposed grid suspended ceiling (lay-in T-Bar) with up to a 3 hour rating. For details of fire rated assemblies, see the current UL Fire Resistance Directory.

The **5500T Series** features the same 'ice tong' pattern controller as used in the **5000 Series** Linear Slot Diffuser, providing total flexibility in all applications. The direction of airflow is adjustable through a full 180° from the face of the diffuser and pattern controllers may also be adjusted for volume control.

In the horizontal discharge setting, the coanda effect is maximized and a tight blanket of air is projected across the ceiling. The horizontal pattern is maintained throughout a wide range of cataloged air volumes from maximum to minimum flow and the **5500T Series** therefore provides excellent performance in variable air volume applications.

FEATURES:

- Full 180° pattern controller adjustment means there are no 'lefts or rights'. Pattern controllers also permit volume control.
- Available in 20", 24", 36", 48" and 60" (500, 600, 900, 1200 and 1500) nominal lengths to suit both imperial and metric ceiling systems.
- Choice of three slot widths.
- Choice of 1, 2, 3 or 4 parallel slots.
- Factory installed center tees on multi-slot models are standard. They are dropped slightly below the diffuser

face to align flush with the ceiling grid.

- Pattern controller is split mid-way on units 48" (1200) and longer, permitting a 2-way opposite blow pattern from a single slot.
- Return models are available. See page F46.
- Units must be installed in accordance with the installation instructions for UL Classification.
- 212°F (100°C) fusible link is standard (165°F (74°C) is optional).

Options:

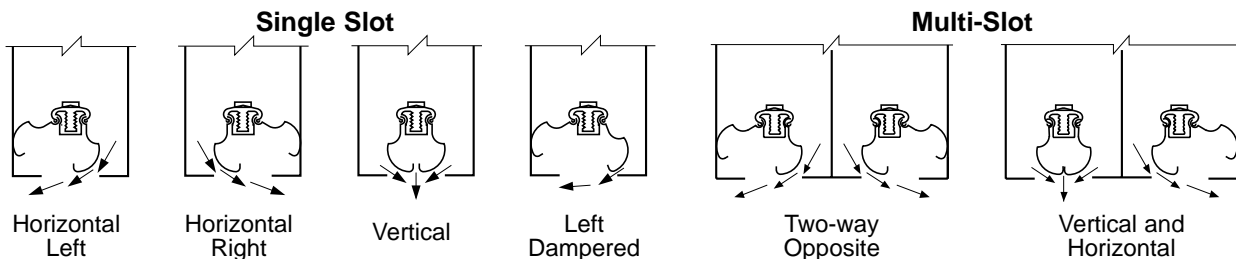
- T1 Supplementary ceiling grid (T-bar) member on inlet side (UL Listed).
- EX External foil back insulation.
- ID Inlet damper.

Material: Corrosion-resistant steel plenum and pattern controllers. Aluminum center tees.

Finish: Black on pattern controllers and exposed surfaces. AW Appliance White on center tees.

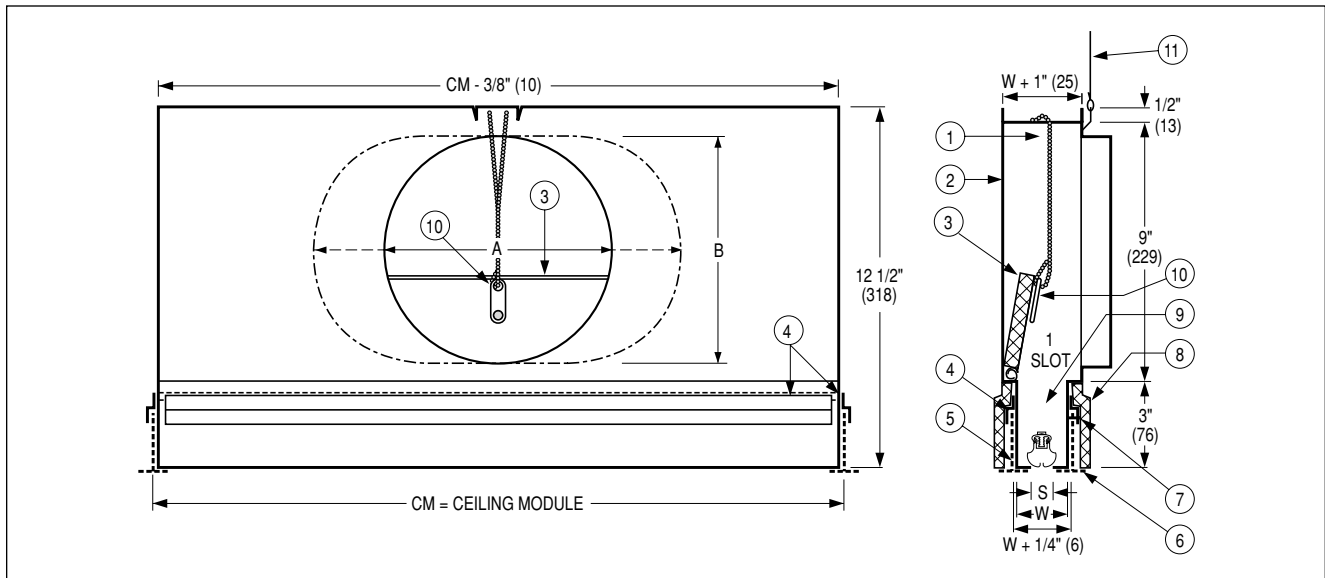
Performance Data: See non-fire rated **Model Series 5800** on page C22.

Air Patterns



Dimensional Data Model Series 5500T

UNDERWRITER'S LABORATORIES, INC.®
CLASSIFIED AIR TERMINAL UNITS
LISTED FOR UP TO 3 HOURS
CATEGORY BZGU

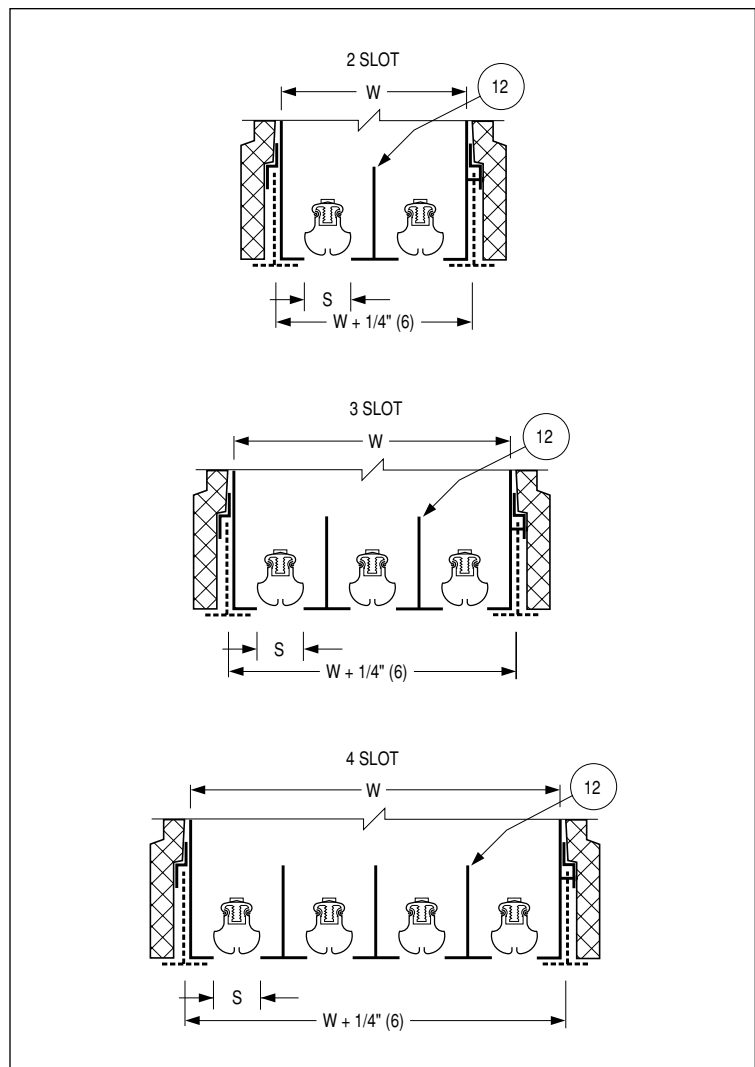


Items:

1. Fusible link damper support chain.
2. Diffuser casing.
3. Insulated, hinged damper blade.
4. Clip for ceiling grid member – 4 sides.
5. Existing grid member.
6. Supplementary ceiling grid member by others. UL Listed.
7. #8 screws for grid member attachment.
8. Thermal shroud.
9. Adjustable pattern controller.
10. UL Listed fusible link (replaceable).
11. Hanger wire at casing mid-point.
12. Intermediate grid bars (shown solid) supplied and installed by factory.

		S (Slot Width)		
		1/2" (13)	3/4" (19)	1" (25)
W (Width)	1 slot	1 1/2" (38)	1 3/4" (44)	2" (51)
	2 slot	3" (76)	3 1/2" (89)	4" (102)
	3 slot	4 1/2" (114)	5 1/4" (133)	6" (152)
	4 slot	6" (152)	7" (178)	8" (203)

		Nominal Inlet Size			
		6 (152) Round	8 (203) Round	10 (254) Oval	12 (305) Oval
A	5 7/8 (149)	7 7/8 (200)	11 (279)	14 1/8 (378)	
B	–	–	7 7/8 (200)	7 7/8 (200)	



F

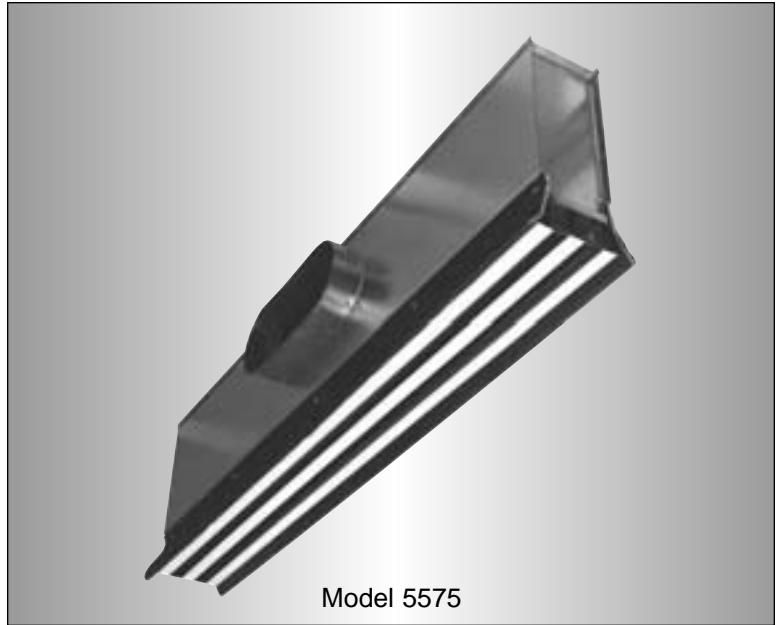
FIRE RATED PRODUCTS

FIRE RATED PLENUM SLOT SUPPLY DIFFUSER

- CURVED BLADE 'FLIP-FLOP' PATTERN CONTROLLER
- 3 HOUR RATING
- LAY-IN



CATEGORY
BZGU



Model:

5575 3/4" (19) Slot Width

FIRE RATED PRODUCTS

The **Nailor Series 5500** is a UL Classified fire rated air terminal unit listed in Underwriters Laboratories Fire Resistance Directory. This design meets UL time-vs-temperature test criteria and NFPA 90A requirements.

All diffusers are classified for use in UL restrained or unrestrained floor/ceiling and or roof/ceiling assemblies which incorporate an exposed grid suspended ceiling (lay-in T-Bar) with up to a 3 hour rating. For details of fire rated assemblies, see the current UL Fire Resistance Directory.

These models feature a roll-formed curved blade pattern controller in each slot. Aerodynamically designed to produce a fixed horizontal discharge pattern, the controller is pivoted at either end and may be simply rotated with fingers from the diffuser face for either a left or right discharge direction.

In the horizontal discharge setting, the coanda effect is maximized and a tight blanket of air is projected across the ceiling. The horizontal pattern is maintained throughout a wide range of cataloged air volumes from maximum to minimum flow and the **5500 Series** therefore provides excellent performance in variable air volume applications.

FEATURES:

- Simple 'Flip-Flop' pattern controller adjustment, from face of diffuser for left or right blow pattern.
- Available in 20", 24", 36", 48" and 60" (500, 600, 900, 1200 and 1500) nominal lengths to suit both imperial and metric ceiling systems.
- Choice of 1, 2, 3 or 4 parallel slots.
- Return models are same design, but omit pattern controllers. See page F46.
- Factory installed center tees on multi-slot models are standard.
- Blades are shipped locked. They may be set for left or right airflow pattern after installation.
- Units must be installed in accordance with the installation instructions for UL Classification.
- 212°F (100°C) fusible link is standard (165°F (74°C) is optional).

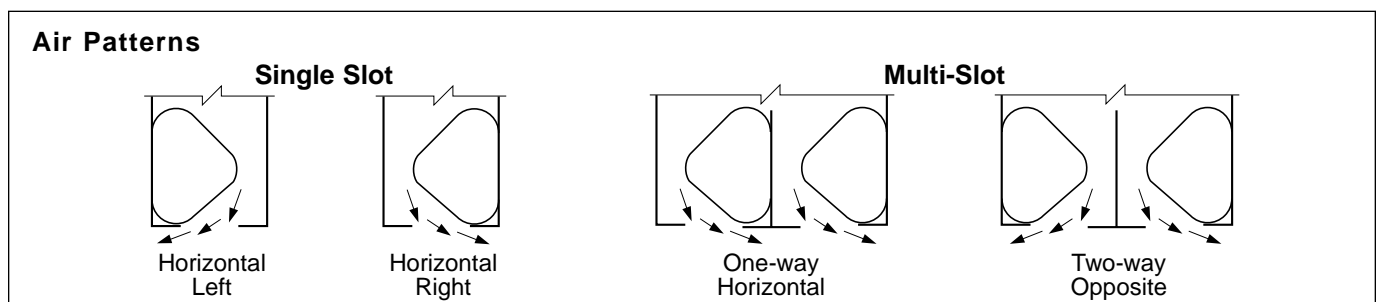
Options:

- T1 Supplementary ceiling grid (T-Bar) member on inlet side (UL Listed).
- EX External foil back insulation.
- ID Inlet damper.

Material: Corrosion-resistant steel.

Finish: Black on pattern controllers and exposed surfaces. AW Appliance White on center tees.

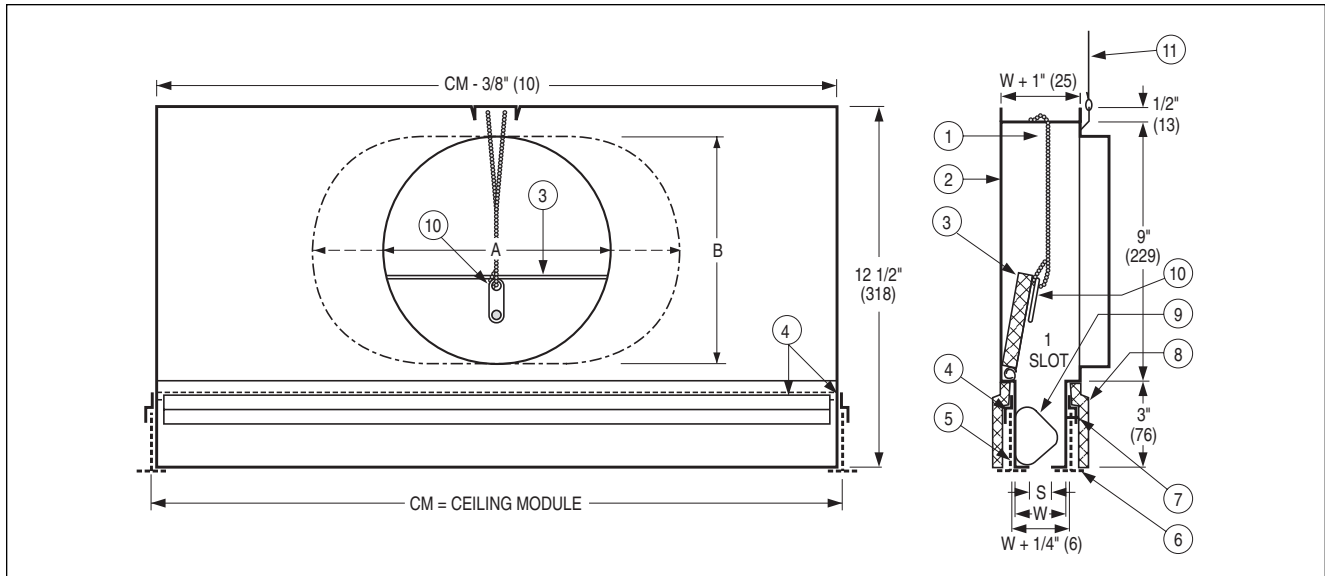
Performance Data: See non-fire rated Model 5675 on page C35.



Dimensional Data

Model Series 5500

UNDERWRITER'S LABORATORIES, INC.®
CLASSIFIED AIR TERMINAL UNITS
LISTED FOR UP TO 3 HOURS
CATEGORY BZGU

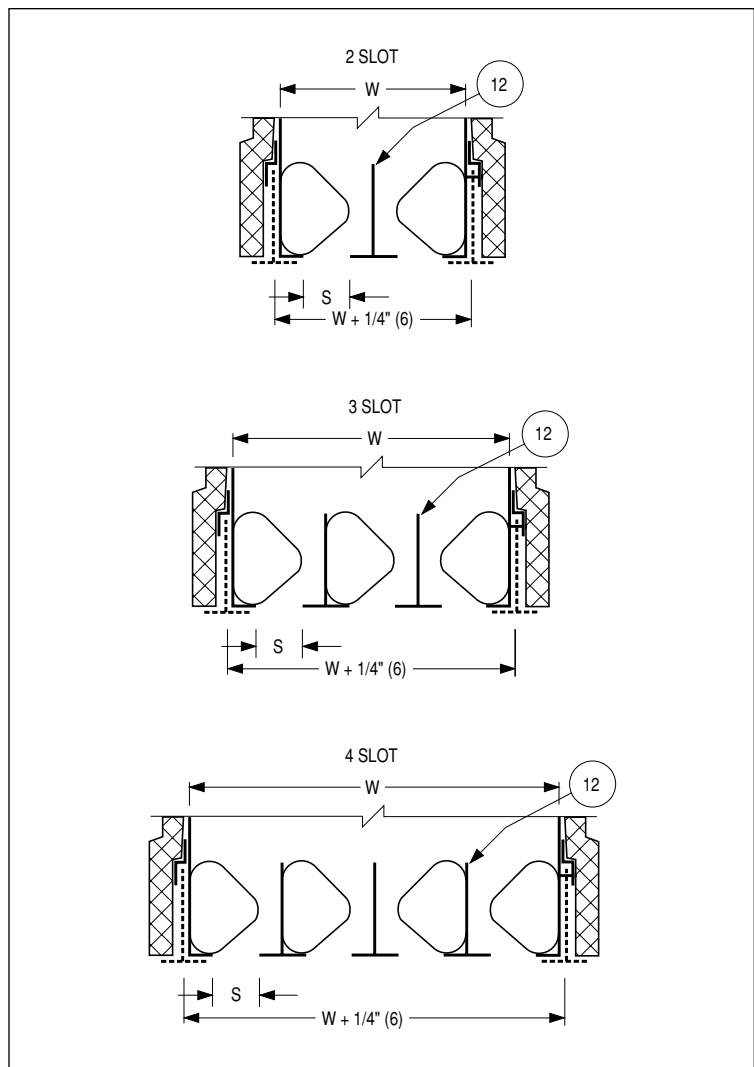


Items:

1. Fusible link damper support chain.
2. Diffuser casing.
3. Insulated, hinged damper blade.
4. Clip for ceiling grid member – 4 sides.
5. Existing grid member.
6. Supplementary ceiling grid member by others. UL Listed. Factory installed ceiling grid members are available. AW White only.
7. #8 screws for grid member attachment.
8. Thermal shroud.
9. Adjustable pattern controller. The position can be as shown or rotated 180° to opposite position.
10. UL Listed fusible link (replaceable).
11. Hanger wire at casing mid-point.
12. Intermediate grid bars supplied and installed by factory.

		S = 3/4" (19)
W Width	1 slot	1 11/16" (43)
	2 slot	3 3/8" (86)
	3 slot	5 1/16" (129)
	4 slot	6 3/4" (171)

	Nominal Inlet Size			
	6 (152) Round	8 (203) Round	10 (254) Oval	12 (305) Oval
A	5 7/8 (149)	7 7/8 (200)	11 (279)	14 1/8 (378)
B	–	–	7 7/8 (200)	7 7/8 (200)



F

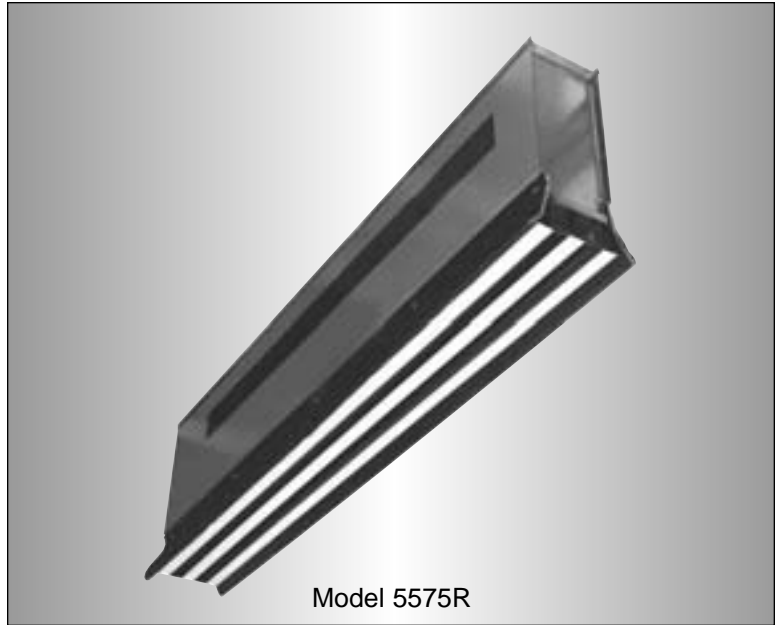
FIRE RATED PRODUCTS

FIRE RATED PLENUM SLOT RETURN DIFFUSER

- 3 HOUR RATING
- LAY-IN



CATEGORY
BZGU



Models:

- 5550R 1/2" (13) Slot Width
- 5575R 3/4" (19) Slot Width
- 5510R 1" (25) Slot Width
- 5515R 1 1/2" (38) Slot Width

F

FIRE RATED PRODUCTS

The **Nailor Series 5500R Return Diffusers** are a UL Classified fire rated air terminal unit listed in Underwriters Laboratories Fire Resistance Directory which compliments the **Model Series 5500** supply models. This design meets UL time-vs-temperature test criteria and NFPA 90A requirements.

All diffusers are classified for use in UL restrained or unrestrained floor/ceiling and or roof/ceiling assemblies which incorporate an exposed grid suspended ceiling (lay-in T-Bar) with up to a 3 hour rating. For details of fire rated assemblies, see the current UL Fire Resistance Directory.

Available in the same module sizes as supply models. Pattern controllers are omitted.

Supplied with a rectangular opening as standard for ductless return applications.

Round/oval connections are an available option.

FEATURES:

- Available in 20", 24", 36", 48" and 60" (500, 600, 900, 1200 and 1500) nominal lengths to suit both imperial and metric ceiling systems.
- Choice of four slot widths.
- Choice of 1, 2, 3 or 4 parallel slots.
- Factory installed center tees on multi-slot models are standard. They are dropped slightly below the diffuser face to align flush with the ceiling grid.
- Units must be installed in accordance with the installation instructions for UL Classification.
- 212°F (100°C) fusible link is standard (165°F (74°C) is optional).

Options:

- T1 Supplementary ceiling grid (T-Bar) member on inlet side (UL Listed).
- EX External foil back insulation.
- ID Inlet damper.

Material: Corrosion-resistant steel plenum. Aluminum center tees.

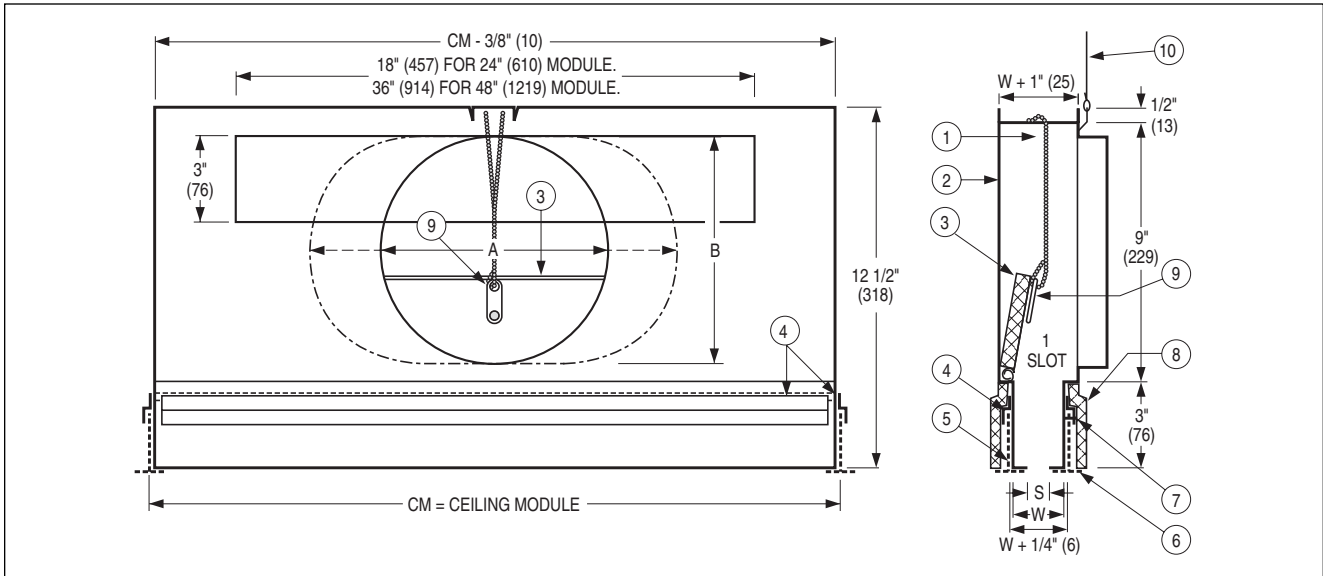
Finish: Black on pattern controllers and exposed surfaces. AW Appliance White on center tees.

Performance Data: See non-fire rated **Model Series 5700R** on page C42.

Dimensional Data

Model Series 5500R • Fire Rated Plenum Slot Return

UNDERWRITER'S LABORATORIES, INC.®
CLASSIFIED AIR TERMINAL UNITS
LISTED FOR UP TO 3 HOURS
CATEGORY BZGU



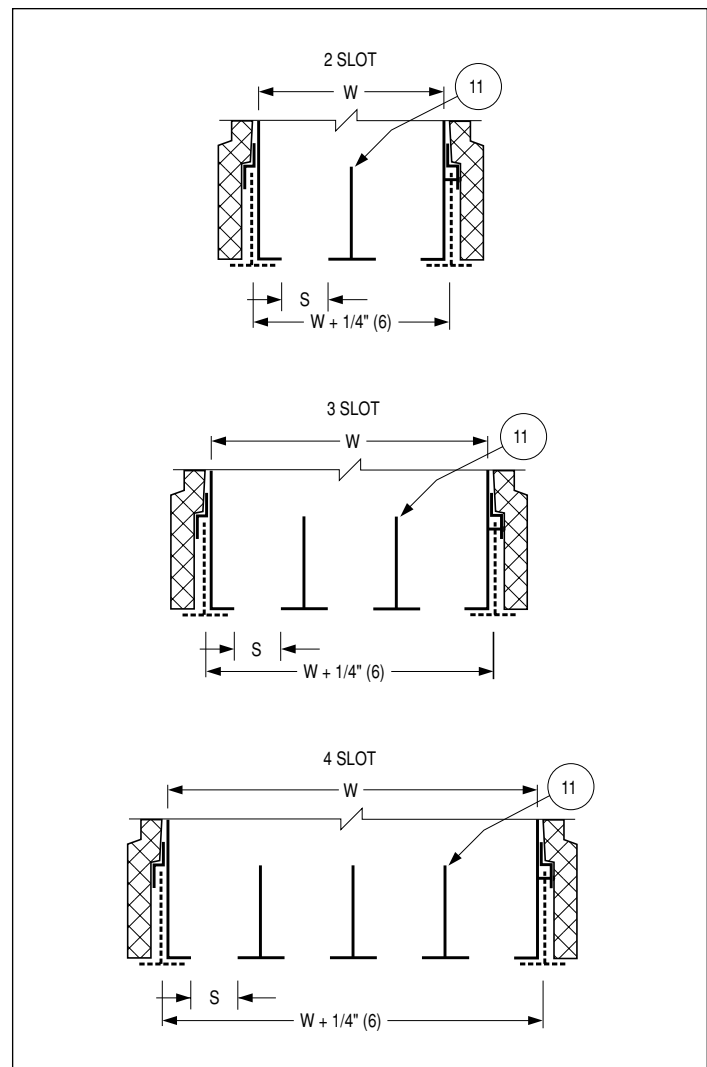
Items:

1. Fusible link damper support chain.
2. Diffuser casing.
3. Insulated, hinged damper blade.
4. Clip for ceiling grid member – 4 sides.
5. Existing grid member.
6. Supplementary ceiling grid member by others. UL Listed.
7. #8 screws for grid member attachment.
8. Thermal shroud.
9. UL Listed fusible link (replaceable).
10. Hanger wire at casing mid-point.
11. Intermediate grid bars (shown solid) supplied and installed by factory.

		S (Slot Width)			
		1/2" (13)	3/4" (19)	1" (25)	1 1/2" (38)
W (Width)	1 slot	1 1/2" (38)	1 3/4" (44)	2" (51)	2 1/2" (64)
	2 slot	3" (76)	3 1/2" (89)	4" (102)	5" (127)
	3 slot	4 1/2" (114)	5 1/4" (133)	6" (152)	7 1/2" (191)
	4 slot	6" (152)	7" (178)	8" (203)	N/A

Optional Round/Oval Connection.

	Nominal Inlet Size			
	6 (152) Round	8 (203) Round	10 (254) Oval	12 (305) Oval
A	5 7/8 (149)	7 7/8 (200)	11 (279)	14 1/8 (378)
B	–	–	7 7/8 (200)	7 7/8 (200)



F

FIRE RATED PRODUCTS