

- POSITIVE PRESSURE TYPE DOOR
- ULTRA-LOW LEAKAGE
- ERGONOMIC SIZING
- INSULATED
- FOR STEEL DUCT



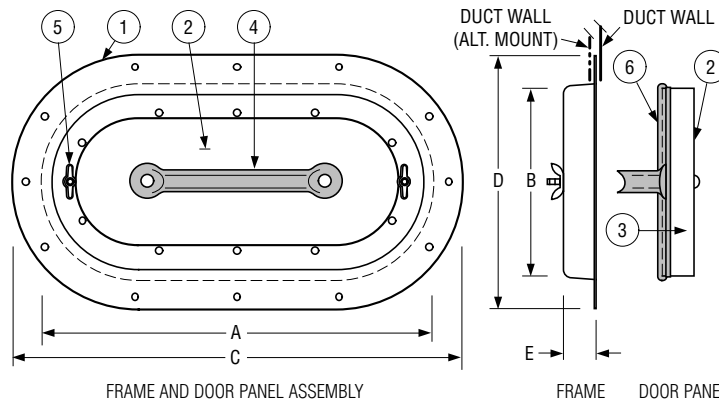
MODEL: 0800-5

ACCESS DOORS

The Nailor 0800-5 Model Series was designed for use in higher pressure applications where the security of a positive pressure type access door is desired. The design of the 0800-5 is such that as positive static in the duct increases, the force exerted on the door compresses the seal, eliminating any leakage possibilities. Features include rugged die-formed construction, safety handles for assured opening and closing, and wing nut fasteners for secure attachment and alignment.

FOR USE IN HIGH AND MEDIUM PRESSURE DUCT SYSTEMS

- SIZES:**
- 8 x 5
(203 x 127)
 - 12 x 6
(304 x 152)
 - 18 x 10
(457 x 254)



DIMENSIONAL DATA:

NOM. SIZE	A	B	C	D	E
8 x 5 (203 x 127)	8 (203)	5 (127)	9 1/2 (241)	6 1/2 (165)	1 1/8 (29)
12 x 6 (305 x 152)	11 3/4 (298)	5 3/4 (146)	13 3/4 (349)	7 3/4 (197)	1 1/8 (29)
18 x 10 (457 x 254)	17 3/4 (451)	9 3/4 (248)	19 3/4 (502)	11 3/4 (298)	1 1/8 (29)

Note: See Ergonomic Sizing Guide on page I7 for sizing assistance.

CONSTRUCTION DETAILS:

1. Die-formed 22 ga. (.85) galv. flanged frame for extra strength.
2. Die-formed 22 ga. (.85) galv. door panel for extra strength.
3. 1" (25) insulation with 22 ga. (.85) galv. backing plate.
4. Safety handle for easy, controlled opening.
5. Plated steel wing nut fasteners.
6. Positive bulb door seal.
7. Layout template included.
8. Oval shaped opening adaptable to all ducts 7" (178) or over.

OPTION:

9. Safety Chain (optional).

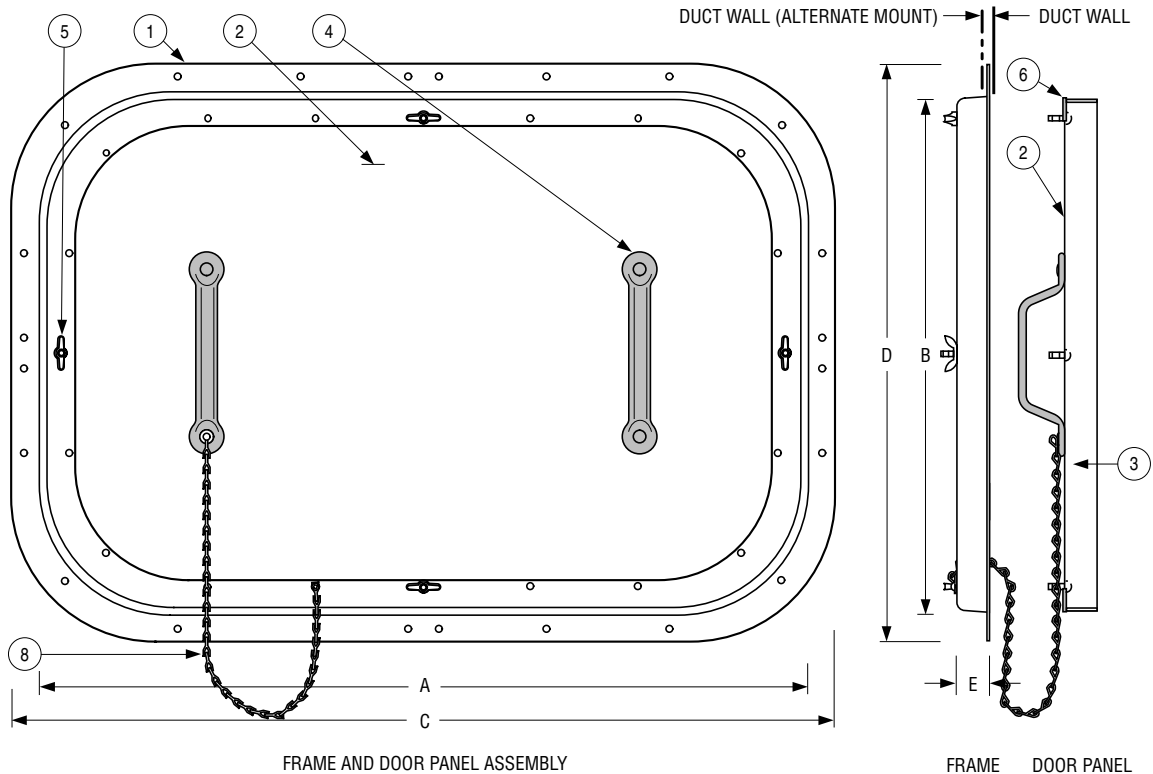
LEAKAGE INFORMATION:

Maximum allowable leakage at 8" w.g. (2 kPa):
 8 x 5: 0.036 cfm (1.02 l/min.)
 12 x 6: 0.064 cfm (1.8 l/min.)
 18 x 10: 0.133 cfm (3.78 l/min.)

MODEL: 0800-5 POSITIVE PRESSURE TYPE DOOR

SIZES: 21 x 14 (533 x 356)
25 x 17 (635 x 432)

FOR USE IN HIGH AND MEDIUM PRESSURE DUCT SYSTEMS



ACCESS DOORS

DIMENSIONAL DATA:

NOM. SIZE	A	B	C	D	E
21 x 14 (533 x 356)	20 3/4 (527)	13 3/4 (349)	22 3/4 (578)	15 3/4 (400)	1 1/8 (29)
25 x 17 (635 x 432)	24 3/4 (629)	16 3/4 (425)	26 3/4 (679)	18 3/4 (476)	1 1/8 (29)

Note: See Ergonomic Sizing Guide on page 17 for sizing assistance.

CONSTRUCTION DETAILS:

1. Die-formed 22 ga. (.85) galv. flanged frame for extra strength.
2. Die-formed 22 ga. (.85) galv. door panel for extra strength.
3. 1" (25) insulation with 22 ga. (.85) galvanized backing plate.
4. Safety handle for easy, controlled opening.
5. Plated steel wing nut fasteners.
6. Positive door seal is standard.
7. Layout template included.

OPTION:

8. Safety chain (optional).

LEAKAGE INFORMATION:

Conforms to British Standard DW142 Class A, B and C.
 Maximum allowable leakage at 8" w.g. (2 kPa):
 21 x 14 (533 x 356): 0.206 cfm (5.82 l/min.)
 25 x 17 (635 x 432): 0.286 cfm (8.1 l/min.)

HOW TO SPECIFY OR TO ORDER**DUCT ACCESS DOORS****MODEL SERIES 0800-5 POSITIVE PRESSURE ACCESS DOORS****SUGGESTED SPECIFICATION:**

Provide and install, as shown on plans and/or schedules and at each fire damper location, positive pressure type duct access doors of suitable size as indicated. Frame shall be of oval design, die-formed of minimum 22 ga. (0.85) galvanized steel with 3/16" (5) dia. prepunched mounting holes. Door shall be die-formed of minimum 22 ga. (0.85) galvanized steel and be of double skin construction with 1" (25) of insulation fully enclosed within. Door shall be complete with safety handle on sizes 8 x 5 (203 x 127) thru 18 x 10 (457 x 254), two safety handles on larger sizes, for secure controlled opening. Door shall be secured with plated steel wing nut fasteners, with bulb type seal integrally fastened to door for positive seal. Manufacturer shall submit leakage data tested to minimum of 8" w.g. (2 kPa). Standard of acceptance: Nailor Industries Model 0800-5.

HOW TO ORDER:

Order by door size, then list options (if desired).

	OPTION CODE	DESCRIPTION
SIZE:	08	8 x 5 (203 x 157)
	12	12 x 6 (305 x 152)
	18	18 x 10 (457 x 254)
	21	21 x 14 (533 x 356)
	25	25 x 17 (635 x 432)
OPTION:	SC	Safety Chain