

- FOR WOOD TRUSS CEILING ASSEMBLIES UL DESIGNS L550/L562 & P531/P538
- SIDE INLET
- STEEL PLENUM

MODELS:

- 0756** GRILLE MOUNT WITH STEEL PLENUM
- 0756D** DUCTED WITH STEEL PLENUM



Nailor Models 0756 and 0756D ceiling radiation dampers with steel plenums have been designed and tested for simple installation in specific wood truss ceiling assemblies. They are UL Classified for use in 1 hour rated UL floor/ceiling design numbers L550/L562 and roof/ceiling design numbers P531/P538. Model 0756 is designed to accommodate a steel grille/diffuser in applications where the plenum terminates at the ceiling. Model 0756D is designed for installation in supply ductwork take-off from an AHU where it penetrates the ceiling and provides a multiple-outlet plenum to feed 0756 grille/diffuser assemblies. The 0756D damper sleeve extends below the ceiling, suitable for ducted connection. Both models feature side connection collars to accept UL Classified Class 0 or 1 flex duct.

QUALIFICATIONS:

- UL 263 Classified Ceiling Radiation Damper. Category CABS. (File # 9660).
- California State Fire Marshal: Ceiling Damper Listing No. 3226-0935:114.
- City of New York MEA No. 366-03-M.
- 1 hour rated for use in UL floor/ceiling design #'s L550/L562 and roof/ceiling design #'s P531/P538 (Similar in construction to designs L546, L521 & P522 respectively).
- Meets NFPA 90A requirements.

Minimum Size: 6" W x 4" H (152 x 102)

Maximum Size:

Model 0756 16" W x 12" H (406 x 305)

Model 0756D 18" W x 18" H (457 x 457)

Available Duct Connection Size: 4" through 10" (102 – 254) dia.

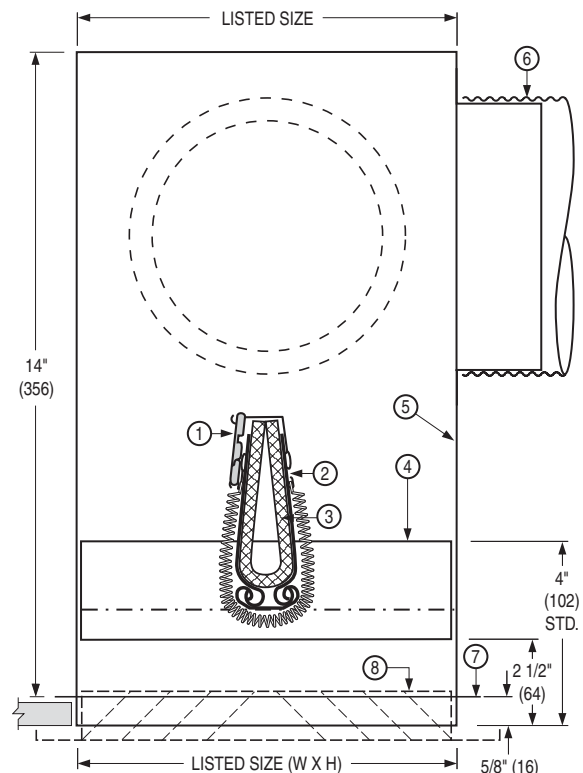
MODEL: 0756

STANDARD CONSTRUCTION:

1. UL listed fusible link, 212°F (100°C) standard.
2. Blades: 22 ga. (0.85) G60 roll-formed galvanized steel.
3. Blade Insulation: Non-asbestos UL Classified.
4. Damper frame: 22 ga. (0.85) G60 galvanized steel.
5. Steel plenum/sub-frame: 26 ga. (0.55) min. with round connection collar(s). Maximum of three.
6. UL Classified Class 0 or I Flexible Air Duct connection by others.
7. 5/8" (16) plaster flange.
8. Model 0756. Steel grille/diffuser (by Nailor or others). Bottom of damper sub-frame is flush with ceiling. Standard depth for grille clearance is 2 1/2" (64).

OPTIONS:

1. 165°F (74°C) UL listed fusible link.
2. Installation Support Angles. 26" (660) long.
ISA 2 @ 3/4" x 3/4" x 16 ga. (19 x 19 x 1.6).
ISB 2 @ 1 1/2" x 1 1/2" x 22 ga. (38 x 38 x 0.85).



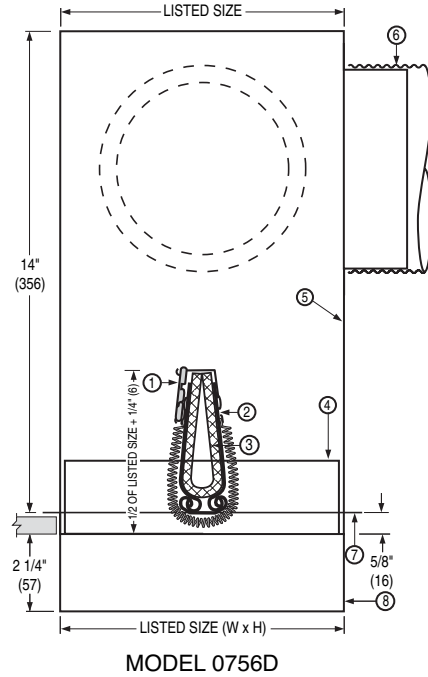
MODEL 0756D

STANDARD CONSTRUCTION:

1. UL listed fusible link, 212°F (100°C) standard.
2. Blades: 22 ga. (0.85) G60 roll-formed galvanized steel.
3. Blade Insulation: Non-asbestos UL Classified.
4. Damper frame: 22 ga. (0.85) G60 galvanized steel.
5. Steel plenum/sub-frame: 26 ga. (0.55) min. with round connection collar(s). Maximum of three.
6. UL Classified Class 0 or I Flexible Air Duct connection by others.
7. Plaster flange.
8. Damper sleeve is extended below ceiling for ducted connection. Damper is mounted in sub-frame to be flush with ceiling when installed.

OPTIONS:

1. Non-standard temp. UL listed fusible link
 - 165°F (74°C)
2. Installation Support Angles. 26" (660) long.
 - ISA 2 @ 3/4" x 3/4" x 16 ga. (19 x 19 x 1.6) or
 - ISB 2 @ 1 1/2" x 1 1/2" x 22 ga. (38 x 38 x 0.85)



H

CEILING DAMPERS

HOW TO SPECIFY OR TO ORDER

MODELS: 0756/0756D

SUGGESTED SPECIFICATION:

Provide and install, as shown on plans and/or schedules, ceiling fire dampers as manufactured by Nailor Industries, qualified for use in specific wood truss ceiling assemblies with a 1 hour fire rating. Dampers shall be manufactured and tested in accordance with UL 555C Standard for Ceiling Dampers and UL 263 Standard for Fire Tests of Building Construction and Materials, and shall bear a UL label. Each ceiling damper shall be held open with a 212°F (100°C) UL Listed fusible link (or specifier to select 165°F (74°C)), and shall be of sizes as indicated. Ceiling damper assembly shall be provided from the factory with a steel plenum/sub-frame with round connection collar(s) of size indicated on drawings. All ceiling dampers shall ship with and be installed in accordance with manufacturer's UL installation instructions. Information submitted for approval shall include same UL installation instructions.

For applications where ductwork terminates at the ceiling, standard of acceptance shall be Nailor Industries Model 0756. A grille/diffuser of minimum 26 ga. (0.55) steel construction and of model specified shall be provided by Nailor Industries to ensure correct fit.

For applications where ductwork is required to continue down past ceiling, plenum (damper sleeve) shall extend down below ceiling suitable for ducted connection. Standard of acceptance in this case shall be Nailor Industries Model 0756D.

HOW TO ORDER:

Order by model number and ceiling opening size. Select round connection collar(s) diameter (4" (102) through 10" (254) dia.) and number of collars (maximum of 3). Then list any options (if desired).
 Note: Collars(s) diameter (maximum 10" (254) dia.) must not exceed listed size – 1" (25).
 ie: 8" x 8" (203 x 203) ceiling opening size may have up to 7" (178) dia. maximum collar(s) size.

	OPTION CODE	DESCRIPTION
FUSIBLE LINK:	165	165°F (74°C) UL Listed Fusible Link
ACCESSORIES:	ISA	Installation Support Angles (One Pair) 26" (660) Long. 3/4" x 3/4" x 16 ga. (19 x 19 x 1.6).
	ISB	Installation Support Angles (One Pair) 26" (660) Long. 1 1/2" x 1 1/2" x 22 ga. (38 x 38 x 0.85).