

- **UL 555S CLASSIFIED SMOKE DAMPER**
- **CLASS I, II or III at 250° or 350°**
- **FOR STATIC OR DYNAMIC SYSTEMS**

MODELS:

- 1260 TYPE A**
- 1261 TYPE A IN SLEEVE**
- 1262 TYPE B**
- 1263 TYPE C**



Model 1260 (shown with SMP)

The Nailor 1260 Series Leakage Rated Dampers are a ruggedly built yet economical choice for use where a smoke barrier has been penetrated by ductwork or where a leakage rated damper is required in a static or dynamic smoke control system. The 1260 Series dampers are classified to UL Standard 555S Class I, II or III at 250°F or 350°F Elevated Temperatures, and are available with type B and C enclosures for small sizes and round ductwork. Featuring a vee-groove style blade design for strength and a sturdy hat channel frame with reinforced corner gussets for rack-free installation, the 1260 Series is available with factory installed sleeves and a wide selection of actuators and control accessories to meet the demanding requirements of today's smoke control applications.

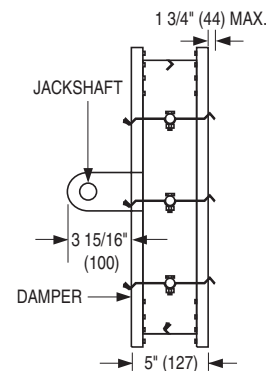
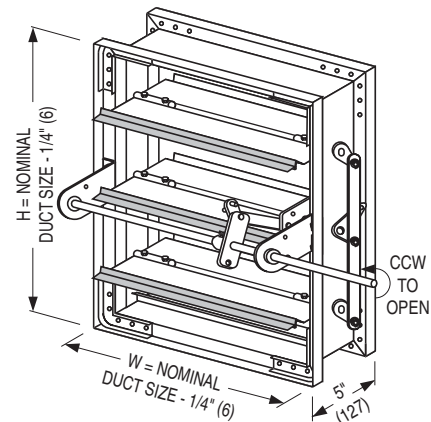
SMOKE DAMPERS

QUALIFICATIONS:

- UL 555S Classified Smoke Damper (File # 9492).
- Leakage Class I, II or III at 250° or 350°F Elevated Temperature.
- For use in Static or Dynamic Smoke Control Systems.
- Meets NFPA 90A, NFPA 92A, BOCA, SBCCI, UBC, and IBC requirements.
- Maximum velocity of 2000 fpm (10 m/s) @4" w.g. (1kPa).

CONSTRUCTION DETAILS:

- FRAME:** 5" x 7/8" x 16 ga. (127 x 22 x 1.6) galvanized steel hat channel.
- BLADES:** 6" (152) wide on 5 1/2" (140) centers. 16 ga. (1.6) galvanized steel vee groove or double skin design. Parallel action.
- LINKAGE:** Concealed in frame. 12 ga. (2.7) plated steel.
- BEARINGS:** 1/2" (13) dia. self-lubricating oilite bronze.
- AXLES:** 1/2" (13) dia. plated steel bolted to blades.
- JACKSHAFT:** 1/2" (13) dia. cadmium plated steel.
- JAMB SEALS:** Stainless steel.
- BLADE SEALS:** Stainless steel.
- MINIMUM SIZE:** 8" x 8" (203 x 203).
- MAXIMUM SIZE:** Single Section
Vertical or Horizontal mount:
36" x 48" (914 x 1219).
Multiple Section Assembly
Vertical or Horizontal mount:
144" x 96" (3658 x 2438), 288" x 48"
(7315 x 1219) or 72" x 144" (1829 x 3658).

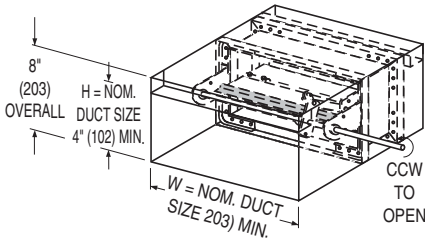


TYPE A: MODEL 1260
TYPE A IN SLEEVE: MODEL 1261

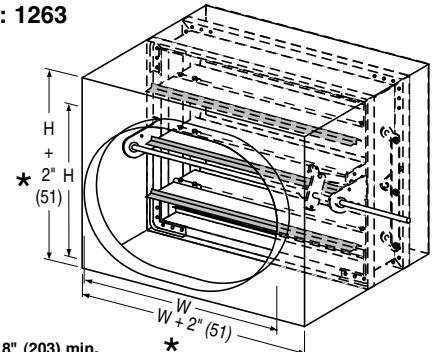
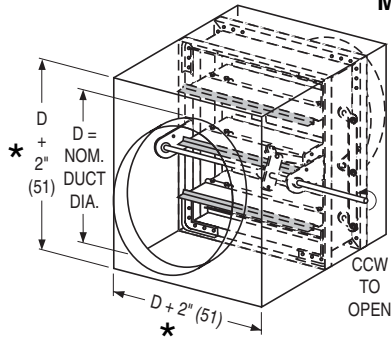
Standard factory sleeve (caulked to UL requirements) 16" long x 20 ga. (406 x 1.0) (18 ga. for dampers over 84" (2134) in width).

Model Series 1260 dampers with duct heights less than 8" (203) require a Type 'B' sleeve enclosure (Model 1262). Units less than 8" (203) in width only, or in both width and height, require a Type 'C' enclosure (Model 1263).

TYPE B SLEEVE ENCLOSURE MODEL: 1262

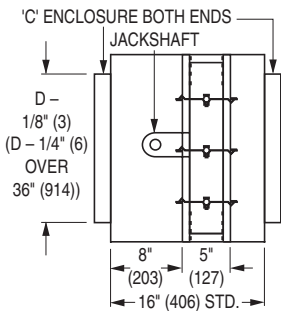
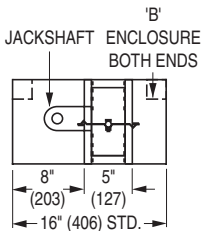


TYPE C SLEEVE ENCLOSURES MODEL: 1263

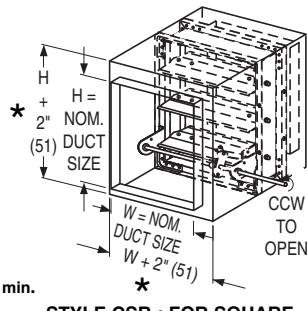


STYLE CR: FOR ROUND DUCT

STYLE CO: FOR OVAL DUCT



TYPE C SIDE VIEW



STYLE CSR: FOR SQUARE or RECTANGULAR DUCT

SMOKE DAMPERS

Min. Duct Size: 8" x 4" (203 x 102)
(Overall damper H is 8" (203)).

Max. Duct Size: Vertical or Horizontal mount:
Single Section
36" x 7 1/2" (914 x 191).
Multiple Section Assembly
288" x 7 1/2" (7315 x 191).

Min. Duct Size: 4" (102) diameter.
(Overall damper H is 8" x 8" (203 x 203) min.).

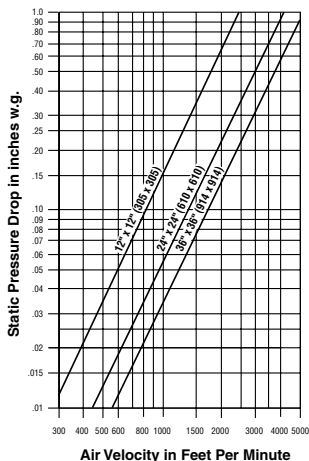
Max. Duct Size: Vertical or Horizontal mount:
Single Section
34" (864) diameter.
Multiple Section Assembly
94" (2388) diameter.

Min. Duct Size: 4" x 4" (102 x 102).
(Overall damper size is 8" x 8" (203 x 203) min.).

Max. Duct Size: Vertical or Horizontal mount:
Single Section
34" x 46" (864 x 1168).
Multiple Section Assembly
142" x 94" (3607 x 2388),
286" x 46" (7264 x 1168) or
70" x 142" (1778 x 3607).

PERFORMANCE DATA:

PRESSURE DROP (damper fully open)



Imperial figures shown.
To convert to SI (metric) system:

Multiply:

CFM x .4719 = liters per second

inches w.g. x .2486 = kilopascals

fpm x .00508 = meters per second

cfm per sq. ft. x 5.08 = liters/second per sq. meter.

LEAKAGE CLASS

The 1260 Series Smoke Damper has been designed and qualified under UL 555S in order to provide maximum system design flexibility. They are available with a Class I, II or Class III leakage rating with all damper/actuator assemblies having been tested successfully at an elevated temperature of 250°F (121°C) or 350°F (176°C) under airflow of 2000 fpm (10 m/s) at 4" w.g. (0.995 kPa).

The criteria for selection should be based upon both first cost consideration and the maximum total acceptable leakage of all closed dampers in the smoke management system when in the smoke control mode. This will have an influence on fan selection and capacity requirement.

Leakage Class	Maximum Leakage cfm/ft ² (m ³ /s/m ²)	
	@ 1" w.g. (0.249 kPa)	@ 4" w.g. (0.995 kPa)
I	4 (0.020)	8 (0.041)
II	10 (0.051)	20 (0.102)
III	40 (0.204)	80 (0.408)

Tested per AMCA standard 500-D, Fig. 5.3.

SMOKE DAMPERS

MODELS: 1260/1261/1262/1263

VARIABLES/ACCESSORIES

VARIABLES:	CODE	DESCRIPTION
MOUNTING:	V	Vertical Mount (wall)
	H	Horizontal Mount (floor)
LEAKAGE/ELEV. TEMP. RATINGS:	125	Class I @ 250°F
	135	Class I @ 350°F
	225	Class II @ 250°F
	235	Class II @ 350°F
	325	Class III @ 250°F
	335	Class III @ 350°F
SLEEVE LENGTH/GAUGE:	Specify Sleeve Length:	12" (305) to 28" (711)
	Specify Sleeve Gauge:	20G, 18G, 16G, 14G 10G
ACTUATORS:	411	Honeywell ML4115 (120 VAC)
	811	Honeywell ML8115 (24 VAC)
	MS4	Honeywell MS4X09 (120 VAC)
	MS8	Honeywell MS8X09 (24 VAC)
	4Y0	Honeywell MS4Y09 (230 VAC)
	F12	Belimo FSNF120 (120 VAC)
	F24	Belimo FSNF24 (24 VAC)
	412	Honeywell MS4120 (120 VAC)
	812	Honeywell MS8120 (24 VAC)
	462	Honeywell MS4620 (230 VAC)
	GD2	Siemens GGD221 (120 VAC)
	GD1	Siemens GGD121 (24 VAC)
	GD3	Siemens GGD321 (230 VAC)
	296	Siemens 331-2961 (25 psi)
	306	Siemens 331-3060 (25 psi)
ACTUATOR MOUNTING:	EXT	External Mount
	INT	Internal Mount
ACTUATOR LOCATION:	RH	Right-Hand Mount
	LH	Left-Hand Mount
	MH	Multi-Hand Mount
FAIL POSITION:	CL	Damper to Fail Closed
	OP	Damper to Fail Open
DAMPER LOCATION IN SLEEVE:	L8	8" (204) from Sleeve End
	L0	Specify Dimension from Sleeve End
IF MODEL 1263 IS SELECTED, SPECIFY TYPE OF TRANSITION:	CR	Round Type C Transitions
	CO	Oval Type C Transitions
	CSR	Square/Rect. Type C Transitions
ACCESSORIES:	CODE	DESCRIPTION
POSITION INDICATOR:	300	MLS-300 Switch Pack
E.P. SWITCH	EP1	120V Siemens 2651008
	EP2	24V Siemens 2651007
ACTUATOR MOUNTING HARDWARE:	SMP	Side Mounting Plate (required for mounting of actuator without sleeve)
FLANGED SLEEVE (MODEL 1261 ONLY)	TDF1	TDF Flange on One End
	TDF2	TDF Flange on Both Ends

F17

SMOKE DAMPERS

HOW TO SPECIFY OR TO ORDER

SMOKE DAMPERS

MODELS: 1260/1261/1262/1263

HOW TO ORDER:

Select model number and size, then select from each variable. Choose accessories as desired. See previous page for description of variables and accessories.

MODEL	SIZE W X H or DIA.	MOUNTING	LEAKAGE/ELEV. TEMP. RATING	SLEEVE LENGTH *	SLEEVE GAUGE *	ACTUATOR	ACTUATOR MOUNTING	ACTUATOR LOCATION	FAIL POSITION	DAMPER LOCATION IN SLEEVE	TRANSITION TYPE (MODEL 1263 ONLY)	ACCESSORIES
1260	ie: 36" x 24"	V/H	125	SPECIFY LENGTH	20G	411	EXT	RH	CL	L8	CR	300
1261	or		135		18G	811	INT	LH	OP	L0	CO	EP1
1262	18" dia.		225		16G	MS4		MH			CSR	EP2
1263			235		14G	MS8						TDF1
			325		10G	4Y0						TDF2
			335			F12						
						F24						
						412						
						812						
						462						
					GD2							
					GD1							
					GD3							
					296							
					306							

Notes: 1. * Standard sleeve is 16" (406) long x 20 ga. (1.0).

SUGGESTED SPECIFICATION:

Provide and install, as shown on plans and/or schedules, Smoke Dampers meeting or exceeding the following criteria: Frame shall be constructed of 16 ga. (1.6) galvanized steel hat channel with mitered corners reinforced with die-formed corner gussets for strength. Blades shall be of vee groove design, 16 ga. (1.6) galvanized steel, on 5 1/2" (140) centers and shall be parallel configuration. Blade axles shall be 1/2" (13) dia. plated steel, double bolted at each end of blade to provide positive locking connection. Hex or square friction-fit, or press-fit axles are not acceptable. Bearings shall be self-lubricating oilite bronze type. Blade linkage shall be zero-maintenance, concealed in frame, out of airstream. Jamb seals shall be compression type cambered stainless steel. Blade seals shall be silicone type.

Dampers shall meet the requirements of NFPA 90A and 92A and shall be classified as **(specifier select one)** a Class I, Class II or Class III Leakage Rated (Smoke) Damper at an elevated temperature of **(specifier select one)** 250°F (141°C) or 350°F (177°C) under UL 555S. Each damper shall bear a UL label verifying same. Dampers shall have been operation tested by UL to a rated airflow of 2000 fpm (10.16 m/s) velocity with blades fully open, at a rated static pressure differential of 4" w.g. (1 kPa) with blades fully closed. Appropriate electric or pneumatic **(specifier select one)** actuators shall be factory installed by damper manufacturer and shall have been tested and classified together under UL 555S at an elevated temperature of **(specifier select one)** 250°F (121°C) or 350°F (171°C). Actuators shall incorporate an OEM internal spring-return mechanism. External after-market spring mechanisms are not acceptable. Damper and actuator assembly shall be factory cycled a minimum of three times to ensure correct operation.

Damper manufacturer shall submit independent test data verifying pressure drop, leakage characteristics and airflow conditions.

Standard of acceptance: Nailor Industries Model 1260.