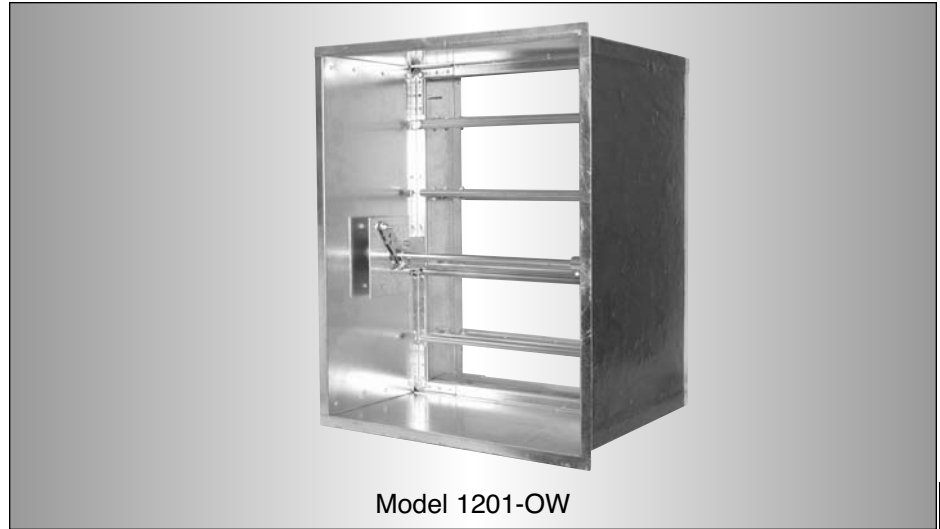


- "OUT OF WALL" MOUNTING
- AIRFOIL BLADE
- UL 555 CLASSIFIED DYNAMIC FIRE DAMPER

MODEL: 1201-OW



Model 1201-OW

The Model 1201-OW is an "out of wall" high performance fire damper. It is specifically designed for supply or return ducts that terminate at a grille and provides through the grille access to the damper. Standard sleeve length accommodates most commercial supply and return grilles/registers.

The 1201-OW is ideal for applications where building codes require a fire damper for the protection of ductwork penetrations in walls or floors that have a fire resistance rating of up to 2 hours.

The 1201-OW offers premium performance and a low pressure drop well suited to the majority of commercial applications. Unique, interlocking double skin blade design eliminates combustible seals and provides flame protection under fire conditions at temperatures up to 2000°F.

The 1201-OW is supplied as standard with an internal locking quadrant which holds the damper in the fully open position, but may also be used for system balancing if required.

QUALIFICATIONS:

- UL 555 CLASSIFIED DYNAMIC FIRE DAMPER • 1 1/2 hr. Label (File #9492).
- Meets NFPA 90A, BOCA, SBCCI, UBC and IBC requirements.
- Maximum velocity 2000 fpm @ 4" w.g..
- For use in vertical or horizontal concrete partitions and vertical steel stud partitions only.

CONSTRUCTION DETAILS:

Frame: 5" x 7/8" x 16 ga. (127 x 22 x 1.6) galvanized steel hat channel.

Blades: 14 ga. (2.0) equivalent galvanized steel formed airfoil on 5 1/2" (140) centers. Opposed action.

Sleeve: 16" x 20 ga. (406 x 1.0) galvanized steel with 3/4" (19) flange on one end standard.

Insulation: Intumescent thermal insulation on four sides.

Linkage: Concealed in frame. 12 ga. (2.7) plated steel.

Bearings: 1/2" (13) dia. self-lubricating oilite bronze.

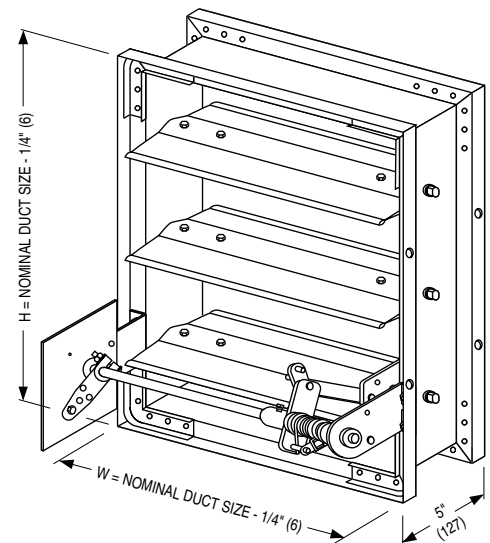
Axles: 1/2" (13) dia. plated steel double bolted to blades.

Jackshaft: 1/2" (13) dia. cadmium plated steel.
Internal locking quadrant is factory installed.

Fusible Link: 165°F (74°C) standard.
212°F (100°C) available.

Minimum Size: Vertical or Horizontal mount: 8" W x 8" H (203 x 203).

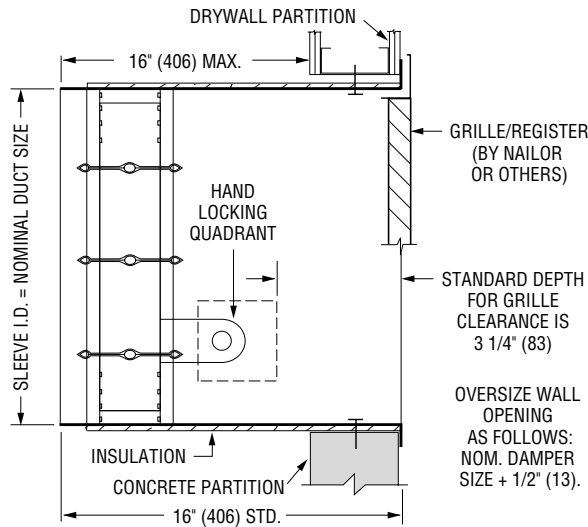
Maximum Size: Single Section
Vertical mount: 36" W x 48" H (914 x 1219).
Horizontal mount: 32" W x 48" H (813 x 1219).
Multiple Section Assemblies are not permitted.



**MODEL 1201-OW
(DAMPER ONLY SHOWN)**

MULTI-BLADE FIRE DAMPERS

MODEL: 1201-OW



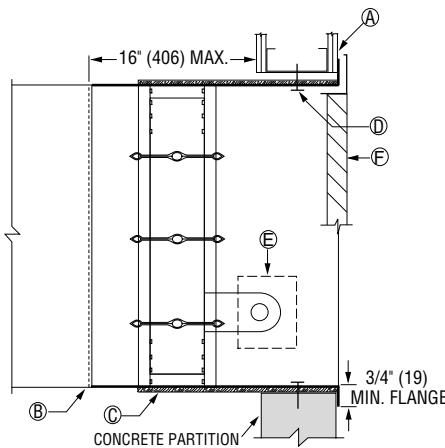
MODEL 1221-OW
'OUT OF WALL' MOUNTING

NOTES:

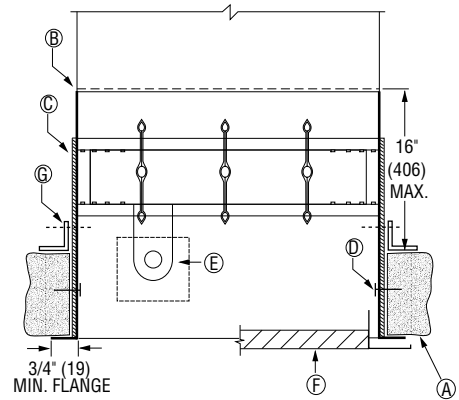
- IMPORTANT: DAMPERS ARE FURNISHED FULL ORDERED SIZE TO FACILITATE GRILLE INSTALLATION. OPENING SIZE IN PARTITION SHOULD BE SIZED 1/2" (13) LARGER IN ALL DIRECTIONS TO ALLOW FOR SLEEVE THICKNESS.**
- FOR PERFORMANCE DATA SEE MODEL 1200.**

MULTI-BLADE FIRE DAMPERS

- A** Typical 2 hour rated vertical concrete or steel stud construction and horizontal concrete fire partition.
- B** Duct connection.
- C** Intumescent material (insulation).
- D** #10 sheet metal screws or concrete anchors.
- E** Manual Locking Quadrant
- F** Grille/Diffuser
- G** Rear retaining angle (required for horizontal mounting).



VERTICAL MOUNT



HORIZONTAL MOUNT

MODEL: 1201-OW

VARIABLES/ACCESSORIES

VARIABLES:	CODE	DESCRIPTION
MOUNTING:	V	Vertical Mount (wall)
	H	Horizontal Mount (floor)
CLOSURE DEVICE:	FL	Fusible Link
CLOSURE TEMP.:	165	165°F (74°C)
	212	212°F (100°C)
OPTIONAL JAMB SEALS:	JSM	Flexible Metal Jamb Seals
ACCESSORIES:	CODE	DESCRIPTION
POSITION INDICATOR:	300	MLS-300 Switch Pack
RETAINING ANGLES:	QS1	One "Quick Set" retaining angle

E

MULTI-BLADE FIRE DAMPERS

HOW TO ORDER

MODEL: 1201-OW

HOW TO ORDER:

Select model number and size, then select from each variable as applicable. Choose accessories as desired. See above for description of variables and accessories.

MODEL	SIZE (W X H)	MOUNTING	CLOSURE DEVICE	CLOSURE TEMP.	JAMB SEALS (OPTIONAL)	ACCESSORIES
1201-OW	ie: 32" x 24"	V H	FL	165 212	NONE JSM	300 QS1

Notes:

- 1. Important: Damper is furnished full ordered size to facilitate grille installation.**

HOW TO SPECIFY

MODEL: 1201-OW

SUGGESTED SPECIFICATION:

Provide and install, as shown on plans and/or schedules, multi-blade "Out of Wall" Dynamic Fire Dampers, as manufactured by Nailor Industries, meeting or exceeding the following criteria: Frame shall be constructed of 16 ga. (1.6) galvanized steel hat channel with mitered corners reinforced with die-formed corner gussets for strength. Blades shall be 14 ga. (2.0) equivalent galvanized steel formed double skin, airfoil design, on 5 1/2" (140) centers. Dampers shall be of opposed blade configuration with an interlocking blade design that provides complete flame and smoke seal under fire conditions at an elevated temperature of 2000°F (1093°C) when in closed position. Blade axles shall be plated steel, double bolted at each end of blade to provide positive locking connection. Hex or square friction-fit, or press-fit axles are not acceptable. Bearings shall be self-lubricating oilite bronze type. Blade linkage shall be zero-maintenance, concealed in frame, out of airstream.

Fire dampers shall meet the requirements of NFPA 90A and shall be manufactured, tested and labeled in accordance with UL 555 Safety Standard for Fire Dampers – Sixth Edition, June 1999, including Dynamic Closure Test. Dampers shall be classified for dynamic closure against an airflow velocity of 2000 fpm (10.16 m/s) at 4" w.g. (1 kPa) static pressure differential (across closed damper).

Each fire damper shall bear a UL 1 1/2 hour fire resistance rating label, in addition to label verifying the airflow and closure pressure ratings as established by the Dynamic Closure Test. Each fire damper shall also be marked with the words "For use in dynamic systems". Dampers marked "For use in static systems only" are not acceptable.

Each fire damper shall be complete with a (**specifier select one**) 165°F (74°C) or 212°F (100°C) UL Listed fusible link that will cause the damper to close and lock in closed position by means of an over center/knee lock linkage for assured closure. Fire dampers shall be supplied with factory installed sleeves of 20 ga. (1.0) galvanized steel with 3/4" (19) flange on one end. Sleeves shall be factory insulated on all four sides with intumescent thermal insulation. Each damper shall be supplied with an internal manual quadrant for setting and locking of blades in desired position. Contractor shall provide and install an access door at each fire damper, of appropriate size to allow for inspection, testing and fusible link replacement. Information submitted for approval shall include independent pressure drop data and confirmation of UL qualifications in addition to manufacturer's installation instructions. Each shipment of fire dampers shall include same installation instructions. Dynamic rated "Out of Wall" fire dampers shall be Nailor Industries Model 1201-OW.