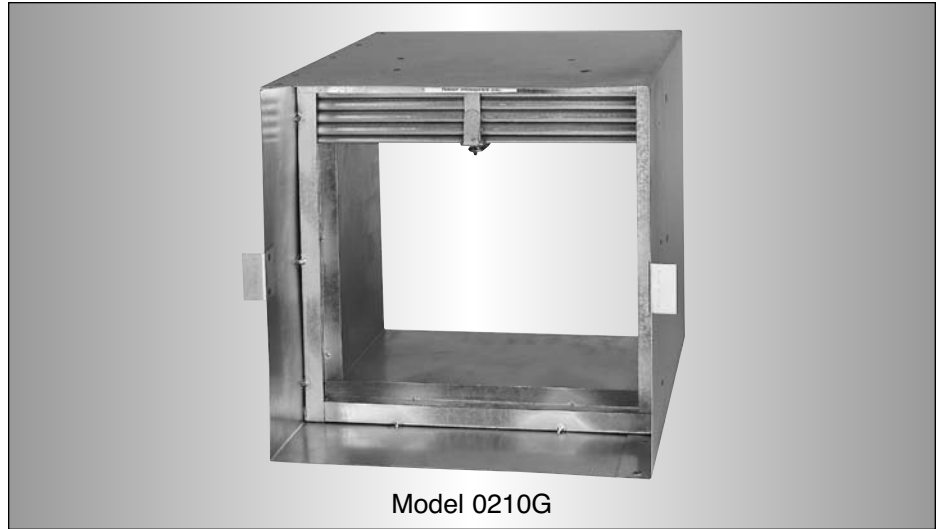


- INTEGRAL SLEEVE FOR USE WITH GRILLE
- THINLINE FIRE DAMPER
- FOR USE IN STATIC SYSTEMS
- 1 1/2 HOUR RATING
- UL 555 CLASSIFIED



MODELS:

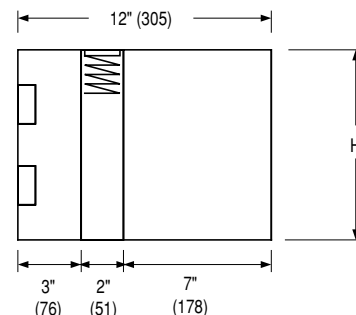
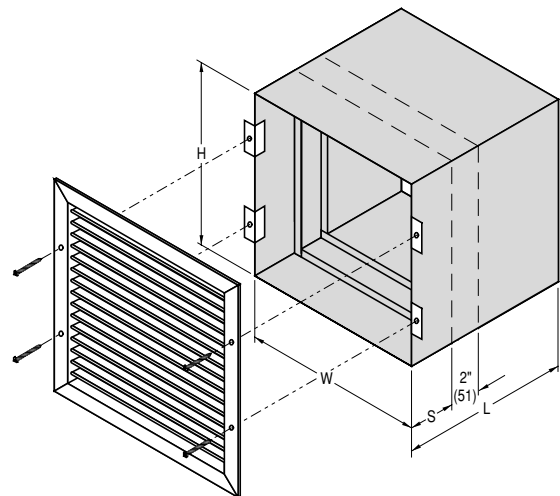
- 0210G TYPE A
- 0220G TYPE B
- 0230G TYPE CR

D
CURTAIN FIRE DAMPERS

The Nailor 0200G Thinline Series integral sleeve fire dampers are designed for use in conjunction with a steel grille when ductwork terminates at an opening in a fire rated wall/partition. The 0200G Thinline Series is 1 1/2 hour UL labeled for use in 2 hour fire separations or less and is classified for use in static "fans off" systems where the HVAC system shuts down in the event of a fire alarm. This unique product utilizes special grille mounting flanges on the sleeve that eliminate the requirement for unsightly retaining angles which commonly protrude from behind the grille. The steel grille installs over and completely conceals the mounting flanges for a clean, aesthetic finish. The 2" (51) deep thinline fire damper is offset in the sleeve to accommodate a single or double deflection grille or register. Countersunk screw holes in the grille frame will match to mounting flanges when Nailor grille is ordered in conjunction with the damper assembly. The 0200G Series features corrosion resistant steel frame, blades and sleeve for lasting performance, and a choice of transition styles and accessories making installation simple and fast.

CONSTRUCTION DETAILS:

	0210G (Type A)	0220G (Type B)	0230G (Type CR)
FRAME:	2" (51) wide, 22 ga. (0.85) roll-formed G60 galvanized steel	2" (51) wide, 22 ga. (0.85) roll-formed G60 galvanized steel	2" (51) wide, 22 ga. (0.85) roll-formed G60 galvanized steel; out of airstream
BLADES:	Curtain type, interlocking blades, 22 ga. (0.85) roll-formed G60 galvanized steel	Out of airstream. Curtain type, interlocking blades, 22 ga. (0.85) roll-formed G60 galvanized steel	Out of airstream. Curtain type, interlocking blades, 22 ga. (0.85) roll-formed G60 galvanized steel
STANDARD SLEEVE:	12" (305) x 22 ga. (0.85) galvanized steel with 3/4" (19) wide grille mounting flanges	12" (305) x 22 ga. (0.85) galvanized steel with 3/4" (19) wide grille mounting flanges; Type B duct connection on one end	12" (305) x 22 ga. (0.85) galvanized steel with 3/4" (19) wide grille mounting flanges; Type C duct connection on one end
FUSIBLE LINK: (UL Listed)	165°F (74°C) Std. 212°F (100°C) available	165°F (74°C) Std. 212°F (100°C) available	165°F (74°C) Std. 212°F (100°C) available
BLADE CLOSURE:	Gravity	Gravity	Gravity
MOUNTING:	For Vertical Mounting	For Vertical Mounting	For Vertical Mounting
OPTIONAL GRILLE:	Steel grille with correctly located countersunk screw holes; Select model from Nailor Air Distribution Catalog	Steel grille with correctly located countersunk screw holes; Select model from Nailor Air Distribution Catalog	Steel grille with correctly located countersunk screw holes; Select model from Nailor Air Distribution Catalog

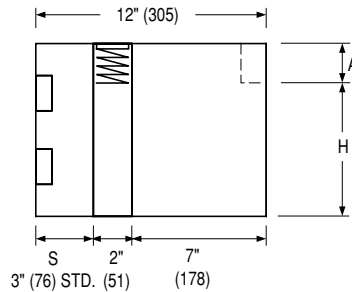


TYPE A: MODEL 0210G

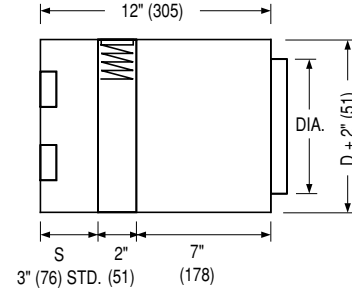
For MIN./MAX. UL SIZES see chart on page D10.

OPTIONAL DAMPER/SLEEVES:

DUCT HEIGHT (H)	'A' DIM.
6" thru 9" (152 - 229)	2" (51)
10" thru 15" (254 - 381)	3" (76)
16" thru 19" (406 - 483)	4" (102)



TYPE B DUCT CONNECTION ON ONE END: MODEL 0220G



TYPE C ROUND DUCT CONNECTION ON ONE END: MODEL 0230G

HOW TO DETERMINE SLEEVE LENGTH/DAMPER POSITION:

To calculate sleeve length, determine wall thickness and add 3" (76) minimum for rear retaining angles and duct connection. Front of assembly fits flush with wall. Damper offset (dimension 'S') should accommodate grille selection depth, but fire damper position must remain within plane of wall.

FOR NON-STANDARD SLEEVE LENGTH, SPECIFY LENGTH.

FOR NON-STANDARD DAMPER POSITION IN SLEEVE, SPECIFY DIMENSION 'S'.

OTHER OPTIONS/ACCESSORIES:

	CODE	DESCRIPTION
QUICK-SET ANGLE	QS1	Single set of "Quick-Set" Retaining Angles for Rear Side
HEMMED SLEEVE	HM1	Sleeve End Hemmed for Slip and Drive Connection
MICROSWITCH	MS MSE	24V Microswitch 120/24V Microswitch with Enclosure

HOW TO SPECIFY

SUGGESTED SPECIFICATION:

Provide and install, as shown on plans and as described in specifications, Thinline fire dampers for use with grilles, as manufactured by Nailor Industries, meeting or exceeding the following criteria: Fire dampers shall be manufactured, tested and labeled in accordance with UL 555 Safety Standard for Fire Dampers - Sixth Edition, June 1999, and shall have a 1 1/2 hour fire resistance rating. Each fire damper shall bear a UL label verifying fire resistance rating in addition to intended mounting position.

Thinline style fire damper frame shall be a maximum of 2" (51) in width, roll-formed from G60 galvanized steel. Blades shall be Thinline type, roll-formed G60 galvanized steel. Each fire damper shall be complete with a (**specifier select one**) 165°F (74°C) or 212°F (100°C) UL Listed fusible link. In addition, each Thinline fire damper shall be provided from the factory in an integral 22 ga (0.85) galvanized steel sleeve with one 'Quick-Set' retaining angle, and grille mounting flanges specially designed for use with a steel grille of minimum 26 ga. (.5) construction. Fire damper shall be offset in the sleeve an appropriate amount to maintain positioning of fire damper within plane of wall. Data submitted for approval shall include confirmation of UL qualifications in addition to manufacturer's installation instructions. Fire dampers shall be installed in accordance with manufacturer's instructions, and same installation instructions shall be included with each fire damper shipment. Thinline fire dampers for use with steel grilles shall be Nailor Industries Models 0210G (Type A), 0220G (Type B transition), 0230G (Type C transition).

D

CURTAIN FIRE DAMPERS